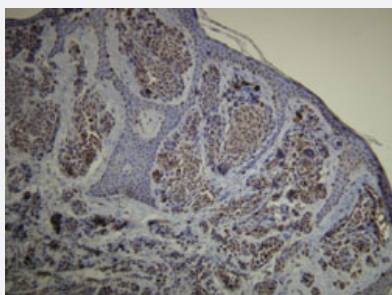


S100A1 monoclonal antibody, clone D28-E

Catalog # MAB15943 Size 200 uL

Applications



Immunohistochemistry (Formalin/PFA-fixed paraffin-embedded sections)

Immunohistochemical staining (Formalin-fixed paraffin-embedded sections) of human cutaneous malignant melanoma with S100A1 monoclonal antibody, clone D28-E (Cat # MAB15943).

Specification

Product Description	Rabbit monoclonal antibody raised against synthetic peptide of human S100A1.
Immunogen	A synthetic peptide corresponding to C-terminus of human S100A1.
Host	Rabbit
Reactivity	Human
Form	Liquid
Purification	EVAC purification
Recommend Usage	Immunohistochemistry (Formalin/PFA-fixed paraffin-embedded sections) (1:100-1:200) The optimal working dilution should be determined by the end user.
Storage Buffer	In 20 mM Tris-HCl buffer, pH 8.0 (20 mg/mL BSA, 0.05% Sodium Azide).
Storage Instruction	Store at 4°C. Do not freeze.
Note	This product contains sodium azide: a POISONOUS AND HAZARDOUS SUBSTANCE which should be handled by trained staff only.

Applications

- Immunohistochemistry (Formalin/PFA-fixed paraffin-embedded sections)

Immunohistochemical staining (Formalin-fixed paraffin-embedded sections) of human cutaneous malignant melanoma with S100A1 monoclonal antibody, clone D28-E (Cat # MAB15943).

Gene Info — S100A1

Entrez GeneID [6271](#)

Protein Accession# [P23297](#)

Gene Name S100A1

Gene Alias S100, S100-alpha, S100A

Gene Description S100 calcium binding protein A1

Omim ID [176940](#)

Gene Ontology [Hyperlink](#)

Gene Summary The protein encoded by this gene is a member of the S100 family of proteins containing 2 EF-hand calcium-binding motifs. S100 proteins are localized in the cytoplasm and/or nucleus of a wide range of cells, and involved in the regulation of a number of cellular processes such as cell cycle progression and differentiation. S100 genes include at least 13 members which are located as a cluster on chromosome 1q21. This protein may function in stimulation of Ca²⁺-induced Ca²⁺ release, inhibition of microtubule assembly, and inhibition of protein kinase C-mediated phosphorylation. Reduced expression of this protein has been implicated in cardiomyopathies. [provided by RefSeq]

Other Designations OTTHUMP00000035100|S100 alpha|S100 calcium-binding protein A1|S100 protein, alpha polypeptide

Publication Reference

- [Immunohistochemical markers for the differential diagnosis of nephrogenic adenomas.](#)

Quinones W, Ziober A, Yao Y, Bing Z.

Annals of Diagnostic Pathology 2013 Feb; 17(1):41.

Application: IHC-P, Human, Human nephrogenic adenoma

Disease

- [Breast cancer](#)
- [Breast Neoplasms](#)
- [Dermatitis](#)
- [DNA Damage](#)
- [Genetic Predisposition to Disease](#)