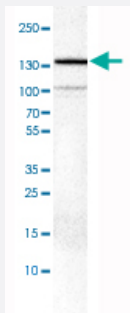


CDH2 monoclonal antibody, clone CL3716

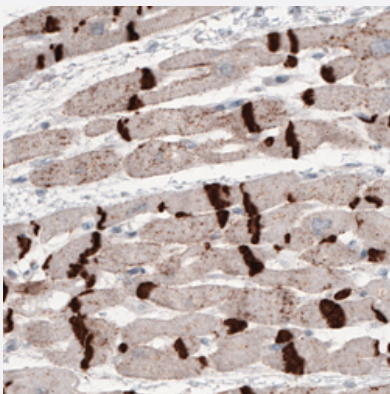
Catalog # MAB15817 Size 100 uL

Applications



Western Blot (Cell lysate)

Western Blot analysis of U-251 MG cell lysate with CDH2 monoclonal antibody, clone CL3716 (Cat # MAB15817).



Immunohistochemistry (Formalin/PFA-fixed paraffin-embedded sections)

Immunohistochemical staining (Formalin-fixed paraffin-embedded sections) of human heart muscle with CDH2 monoclonal antibody, clone CL3716 (Cat # MAB15817) shows strong immunoreactivity in the intercalated discs.

Specification

Product Description	Mouse monoclonal antibody raised against partial recombinant human CDH2.
Immunogen	Recombinant protein corresponding to human CDH2.
Epitope	This antibody binds to an epitope located within the peptide sequence ENPYFAPNPK as determined by overlapping synthetic peptides.
Sequence	NSNDGLVTVVKPIDFETNRMFVLTVAAENQVPLAKGIQHPPQSTATVSVTVIDVNENPYFAPNPKII RQEEGLHAGTMLTTFTAQDP
Host	Mouse

Reactivity	Human
Form	Liquid
Purification	Protein A purification
Isotype	IgG1
Recommend Usage	Immunohistochemistry (Formalin/PFA-fixed paraffin-embedded sections) (1:500-1:1000) Western Blot (1:500-1:1000) The optimal working dilution should be determined by the end user.
Storage Buffer	In PBS, pH 7.2 (40% glycerol, 0.02% sodium azide).
Storage Instruction	Store at 4°C. For long term storage store at -20°C. Aliquot to avoid repeated freezing and thawing.
Note	This product contains sodium azide: a POISONOUS AND HAZARDOUS SUBSTANCE which should be handled by trained staff only.

Applications

- Western Blot (Cell lysate)

Western Blot analysis of U-251 MG cell lysate with CDH2 monoclonal antibody, clone CL3716 (Cat # MAB15817).

- Immunohistochemistry (Formalin/PFA-fixed paraffin-embedded sections)

Immunohistochemical staining (Formalin-fixed paraffin-embedded sections) of human heart muscle with CDH2 monoclonal antibody, clone CL3716 (Cat # MAB15817) shows strong immunoreactivity in the intercalated discs.

Gene Info — CDH2

Entrez GeneID	1000
Protein Accession#	P19022
Gene Name	CDH2
Gene Alias	CD325, CDHN, CDw325, NCAD
Gene Description	cadherin 2, type 1, N-cadherin (neuronal)
Omim ID	114020
Gene Ontology	Hyperlink

Gene Summary

This gene is a classical cadherin from the cadherin superfamily. The encoded protein is a calcium dependent cell-cell adhesion glycoprotein comprised of five extracellular cadherin repeats, a trans membrane region and a highly conserved cytoplasmic tail. The protein functions during gastrulation and is required for establishment of left-right asymmetry. At certain central nervous system synapses, presynaptic to postsynaptic adhesion is mediated at least in part by this gene product. [provided by RefSeq]

Other Designations

N-cadherin 1|cadherin 2, N-cadherin (neuronal)|cadherin 2, type 1|calcium-dependent adhesion protein, neuronal|neural cadherin

Pathway

- [Arrhythmogenic right ventricular cardiomyopathy \(ARVC\)](#)
- [Cell adhesion molecules \(CAMs\)](#)

Disease

- [Cleft Lip](#)
- [Cleft Palate](#)
- [Esophageal Neoplasms](#)
- [Genetic Predisposition to Disease](#)
- [Head and Neck Neoplasms](#)
- [Laryngeal Neoplasms](#)
- [Mouth Neoplasms](#)
- [Pharyngeal Neoplasms](#)
- [Tobacco Use Disorder](#)
- [Tooth Abnormalities](#)