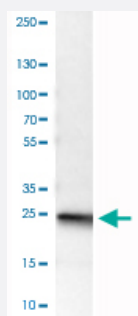


UCHL1 monoclonal antibody, clone CL3210

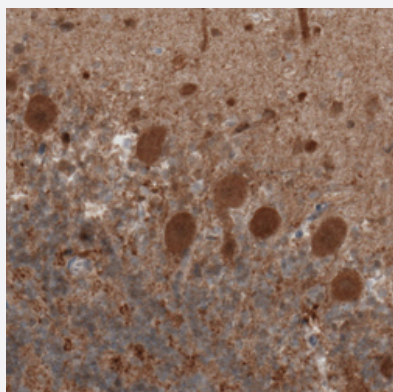
Catalog # MAB15796 Size 100 uL

Applications



Western Blot (Tissue lysate)

Western Blot analysis of human cerebral cortex tissue lysate with UCHL1 monoclonal antibody, clone CL3210 (Cat # MAB15796).



Immunohistochemistry (Formalin/PFA-fixed paraffin-embedded sections)

Immunohistochemical staining (Formalin-fixed paraffin-embedded sections) of human cerebellum with UCHL1 monoclonal antibody, clone CL3210 (Cat # MAB15796) shows moderate positivity in Purkinje cells.

Specification

Product Description	Mouse monoclonal antibody raised against partial recombinant human UCHL1.
Immunogen	Recombinant protein corresponding to human UCHL1.
Epitope	This antibody binds to an epitope located within the peptide sequence AVANNQDKLG as determined by overlapping synthetic peptides.
Sequence	QEVSPKVYFMKQTIGNSCGTIGLIHAVANNQDKLGFEDGSVLKQFLSETEKMSPEDRAKCFEKNE AIQAAHDAVAQEGQCRVDDKVNHFHILFNNVDGHLYELDGRMPFPVNHGASSEDLLKDAAKVC REFTEREQGEVRFSAVAL

Host	Mouse
Reactivity	Human, Mouse, Rat
Form	Liquid
Purification	Protein A purification
Isotype	IgG1
Recommend Usage	Immunohistochemistry (Formalin/PFA-fixed paraffin-embedded sections) (1:5000-1:10000) Western Blot (1:500-1:1000) The optimal working dilution should be determined by the end user.
Storage Buffer	In PBS, pH 7.2 (40% glycerol, 0.02% sodium azide).
Storage Instruction	Store at 4°C. For long term storage store at -20°C. Aliquot to avoid repeated freezing and thawing.
Note	This product contains sodium azide: a POISONOUS AND HAZARDOUS SUBSTANCE which should be handled by trained staff only.

Applications

- Western Blot (Tissue lysate)

Western Blot analysis of human cerebral cortex tissue lysate with UCHL1 monoclonal antibody, clone CL3210 (Cat # MAB15796).

- Immunohistochemistry (Formalin/PFA-fixed paraffin-embedded sections)

Immunohistochemical staining (Formalin-fixed paraffin-embedded sections) of human cerebellum with UCHL1 monoclonal antibody, clone CL3210 (Cat # MAB15796) shows moderate positivity in Purkinje cells.

Gene Info — UCHL1

Entrez GeneID	7345
Protein Accession#	P09936
Gene Name	UCHL1
Gene Alias	PARK5, PGP9.5, Uch-L1
Gene Description	ubiquitin carboxyl-terminal esterase L1 (ubiquitin thiolesterase)
Omim ID	168600 191342

Gene Ontology[Hyperlink](#)**Gene Summary**

The protein encoded by this gene belongs to the peptidase C12 family. This enzyme is a thiol protease that hydrolyzes a peptide bond at the C-terminal glycine of ubiquitin. This gene is specifically expressed in the neurons and in cells of the diffuse neuroendocrine system. Mutations in this gene may be associated with Parkinson disease

Other Designations

ubiquitin C-terminal esterase L1|ubiquitin carboxyl-terminal esterase L1|ubiquitin thiolesterase L1

Disease

- [Alzheimer disease](#)
- [Genetic Predisposition to Disease](#)
- [Huntington disease](#)
- [Movement Disorders](#)
- [Multiple System Atrophy](#)
- [Parkinson disease](#)
- [Parkinsonian Disorders](#)