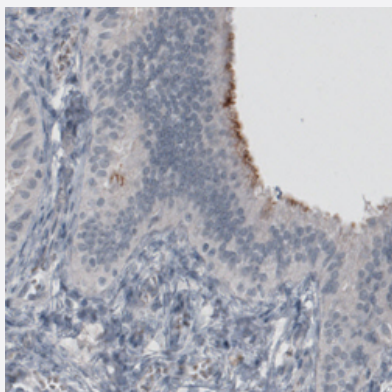


# MUC16 monoclonal antibody, clone CL2782

Catalog # MAB15774      Size 100 uL

## Applications



### Immunohistochemistry (Formalin/PFA-fixed paraffin-embedded sections)

Immunohistochemical staining (Formalin-fixed paraffin-embedded sections) of human fallopian tube with MUC16 monoclonal antibody, clone CL2782 (Cat # MAB15774) shows positivity in ciliated glandular cells.

## Specification

<b>Product Description</b>	Mouse monoclonal antibody raised against partial recombinant human MUC16.
<b>Immunogen</b>	Recombinant protein corresponding to human MUC16.
<b>Epitope</b>	This antibody binds to an epitope located within the peptide sequence NVQQQCPGYQSHLD as determined by overlapping synthetic peptides.
<b>Sequence</b>	GVLVTTRRRKKEGEYNVQQQCPGYQSHLDLEDLQ
<b>Host</b>	Mouse
<b>Reactivity</b>	Human
<b>Form</b>	Liquid
<b>Purification</b>	Protein A purification
<b>Isotype</b>	IgG1
<b>Recommend Usage</b>	Immunohistochemistry (Formalin/PFA-fixed paraffin-embedded sections) (1:500-1:1000) The optimal working dilution should be determined by the end user.

<b>Storage Buffer</b>	In PBS, pH 7.2 (40% glycerol, 0.02% sodium azide).
<b>Storage Instruction</b>	Store at 4°C. For long term storage store at -20°C. Aliquot to avoid repeated freezing and thawing.
<b>Note</b>	This product contains sodium azide: a POISONOUS AND HAZARDOUS SUBSTANCE which should be handled by trained staff only.

## Applications

- Immunohistochemistry (Formalin/PFA-fixed paraffin-embedded sections)

Immunohistochemical staining (Formalin-fixed paraffin-embedded sections) of human fallopian tube with MUC16 monoclonal antibody, clone CL2782 (Cat # MAB15774) shows positivity in ciliated glandular cells.

## Gene Info — MUC16

<b>Entrez GeneID</b>	<a href="#">94025</a>
<b>Protein Accession#</b>	<a href="#">Q8WXI7</a>
<b>Gene Name</b>	MUC16
<b>Gene Alias</b>	CA125, FLJ14303
<b>Gene Description</b>	mucin 16, cell surface associated
<b>Omim ID</b>	<a href="#">606154</a>
<b>Gene Ontology</b>	<a href="#">Hyperlink</a>
<b>Gene Summary</b>	O
<b>Other Designations</b>	CA125 ovarian cancer antigen mucin 16

## Disease

- [Genetic Predisposition to Disease](#)
- [Neoplasms](#)
- [Ovarian cancer](#)
- [Ovarian Neoplasms](#)