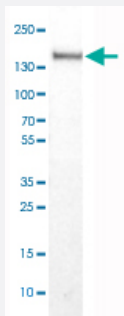


# ITGAX monoclonal antibody, clone CL1831

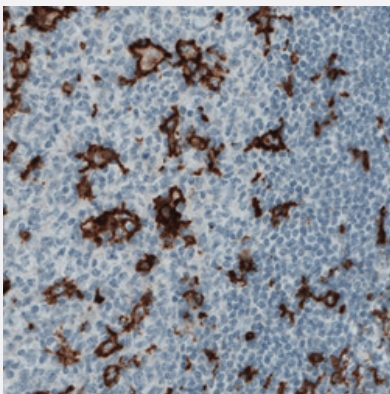
Catalog # MAB15721      Size 100 uL

## Applications



### Western Blot (Tissue lysate)

Western Blot analysis of human tonsil tissue lysate with ITGAX monoclonal antibody, clone CL1831 (Cat # MAB15721).



### Immunohistochemistry (Formalin/PFA-fixed paraffin-embedded sections)

Immunohistochemical staining (Formalin-fixed paraffin-embedded sections) of human tonsil with ITGAX monoclonal antibody, clone CL1831 (Cat # MAB15721) shows strong immunoreactivity in the dendritic cells.

## Specification

<b>Product Description</b>	Mouse monoclonal antibody raised against partial recombinant human ITGAX.
<b>Immunogen</b>	Recombinant protein corresponding to human ITGAX.
<b>Epitope</b>	This antibody binds to an epitope located within the peptide sequence LYDKRSKNLLGSRD as determined by overlapping synthetic peptides.
<b>Sequence</b>	QDGLVDLAVGARGQVLLLRTRPVLWVGVSMMQFIPAEIPRSAFECREQVVSEQLVQSNICLYIDKR SKNLLGSRDLQSSVTLDLALDPGRLSPRATFQETKNRSLSRVRV
<b>Host</b>	Mouse

Reactivity	Human
Form	Liquid
Purification	Protein A purification
Isotype	IgG1
Recommend Usage	Immunohistochemistry (Formalin/PFA-fixed paraffin-embedded sections) (1:200-1:500) Western Blot (1:500-1:1000) The optimal working dilution should be determined by the end user.
Storage Buffer	In PBS, pH 7.2 (40% glycerol, 0.02% sodium azide).
Storage Instruction	Store at 4°C. For long term storage store at -20°C. Aliquot to avoid repeated freezing and thawing.
Note	This product contains sodium azide: a POISONOUS AND HAZARDOUS SUBSTANCE which should be handled by trained staff only.

## Applications

- Western Blot (Tissue lysate)

Western Blot analysis of human tonsil tissue lysate with ITGAX monoclonal antibody, clone CL1831 (Cat # MAB15721).

- Immunohistochemistry (Formalin/PFA-fixed paraffin-embedded sections)

Immunohistochemical staining (Formalin-fixed paraffin-embedded sections) of human tonsil with ITGAX monoclonal antibody, clone CL1831 (Cat # MAB15721) shows strong immunoreactivity in the dendritic cells.

## Gene Info — ITGAX

Entrez GeneID	<a href="#">3687</a>
Protein Accession#	<a href="#">P20702</a>
Gene Name	ITGAX
Gene Alias	CD11C, SLEB6
Gene Description	integrin, alpha X (complement component 3 receptor 4 subunit)
Omim ID	<a href="#">151510</a>
Gene Ontology	<a href="#">Hyperlink</a>

**Gene Summary**

This gene encodes the integrin alpha X chain protein. Integrins are heterodimeric integral membrane proteins composed of an alpha chain and a beta chain. This protein combines with the beta 2 chain (ITGB2) to form a leukocyte-specific integrin referred to as inactivated-C3b (iC3b) receptor 4 (CR4). The alpha X beta 2 complex seems to overlap the properties of the alpha M beta 2 integrin in the adherence of neutrophils and monocytes to stimulated endothelium cells, and in the phagocytosis of complement coated particles. [provided by RefSeq]

**Other Designations**

OTTHUMP00000163299|integrin alpha X|integrin, alpha X (antigen CD11C (p150), alpha polypeptide)|leu M5, alpha subunit|leukocyte surface antigen p150,95, alpha subunit|myeloid membrane antigen, alpha subunit|p150 95 integrin alpha chain

## Pathway

- [Regulation of actin cytoskeleton](#)

## Disease

- [Genetic Predisposition to Disease](#)
- [Helicobacter Infections](#)
- [Lupus Erythematosus](#)
- [Stomach Ulcer](#)