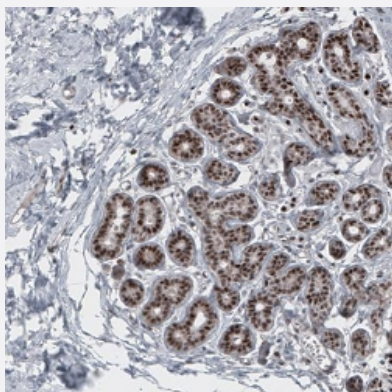


SOX10 monoclonal antibody, clone CL4455

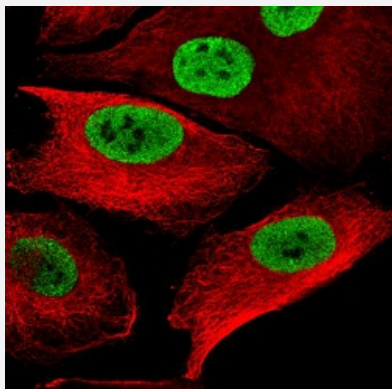
Catalog # MAB15710 Size 100 uL

Applications



Immunohistochemistry (Formalin/PFA-fixed paraffin-embedded sections)

Immunohistochemical staining (Formalin-fixed paraffin-embedded sections) of human breast shows strong nuclear positivity in glandular cells.



Immunofluorescence

Immunofluorescence staining of WM-115 cell with antibody shows specific staining in the nucleoplasm in green. Microtubule- and nuclear probes are visualized in red and blue, respectively.

Specification

Product Description	Mouse monoclonal antibody raised against partial recombinant human SOX10.
Immunogen	Recombinant protein corresponding to human SOX10.
Sequence	PHYTDQPSTSQIAYTSLSLPHYGSAFPSISRPQFDYSDHQPSGPYYGHSG
Host	Mouse
Reactivity	Human, Mouse

Form	Liquid
Purification	Protein A purification
Isotype	IgG1
Recommend Usage	Immunohistochemistry (Formalin/PFA-fixed paraffin-embedded sections) (1:2500-1:5000) Immunofluorescence (1-4 ug/mL) The optimal working dilution should be determined by the end user.
Storage Buffer	In PBS, pH 7.2 (40% glycerol, 0.02% sodium azide).
Storage Instruction	Store at 4°C. For long term storage store at -20°C. Aliquot to avoid repeated freezing and thawing.
Note	This product contains sodium azide: a POISONOUS AND HAZARDOUS SUBSTANCE which should be handled by trained staff only.

Applications

- Immunohistochemistry (Formalin/PFA-fixed paraffin-embedded sections)

Immunohistochemical staining (Formalin-fixed paraffin-embedded sections) of human breast shows strong nuclear positivity in glandular cells.

- Immunofluorescence

Immunofluorescence staining of WM-115 cell with antibody shows specific staining in the nucleoplasm in green. Microtubule- and nuclear probes are visualized in red and blue, respectively.

Gene Info — SOX10

Entrez GeneID	6663
Protein Accession#	P56693
Gene Name	SOX10
Gene Alias	DOM, MGC15649, WS2E, WS4
Gene Description	SRY (sex determining region Y)-box 10
Omim ID	277580 601706 602229 609136
Gene Ontology	Hyperlink

Gene Summary

This gene encodes a member of the SOX (SRY-related HMG-box) family of transcription factors involved in the regulation of embryonic development and in the determination of the cell fate. The encoded protein may act as a transcriptional activator after forming a protein complex with other proteins. This protein acts as a nucleocytoplasmic shuttle protein and is important for neural crest and peripheral nervous system development. Mutations in this gene are associated with Waardenburg-Shah and Waardenburg-Hirschsprung disease. [provided by RefSeq]

Other Designations

OTTHUMP00000028515|OTTHUMP00000195094|SRY-related HMG-box gene 10|dominant megacolon, mouse, human homolog of

Disease

- [Genetic Predisposition to Disease](#)
- [Hirschsprung Disease](#)
- [Kidney Failure](#)
- [Malignant melanoma](#)
- [Melanoma](#)
- [Neoplasm Metastasis](#)
- [Schizophrenia](#)
- [Skin Neoplasms](#)