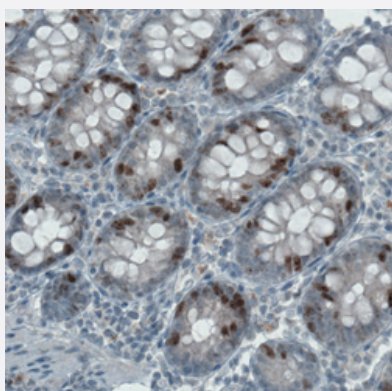


# MKI67 monoclonal antibody, clone CL1234

Catalog # MAB15675      Size 100 uL

## Applications



### Immunohistochemistry (Formalin/PFA-fixed paraffin-embedded sections)

Immunohistochemical staining (Formalin-fixed paraffin-embedded sections) of human colon with MKI67 monoclonal antibody, clone CL1234 (Cat # MAB15675) shows nuclear positivity in a subset of glandular cells.

## Specification

<b>Product Description</b>	Mouse monoclonal antibody raised against partial recombinant human MKI67.
<b>Immunogen</b>	Recombinant protein corresponding to human MKI67.
<b>Epitope</b>	This antibody binds to an epitope located within the peptide sequence PLSLSTCLFGRGIEC as determined by overlapping synthetic peptides.
<b>Sequence</b>	DGPHFPLSLSTCLFGRGIECDIRIQLPVVSKQHCKIEIHEQEAILHNFSSNTPTQVNGSVIDEPVRLK HGDVITIIDRSFRYENESLQSGRKSTEFPRKIREQEPARRVSRSSFSSDPDEKAQDSKAYSKITEG KVSGNPQVHI
<b>Host</b>	Mouse
<b>Reactivity</b>	Human
<b>Form</b>	Liquid
<b>Purification</b>	Protein A purification
<b>Isotype</b>	IgG1

<b>Recommend Usage</b>	Immunohistochemistry (Formalin/PFA-fixed paraffin-embedded sections) (1:200-1:500) The optimal working dilution should be determined by the end user.
<b>Storage Buffer</b>	In PBS, pH 7.2 (40% glycerol, 0.02% sodium azide).
<b>Storage Instruction</b>	Store at 4°C. For long term storage store at -20°C. Aliquot to avoid repeated freezing and thawing.
<b>Note</b>	This product contains sodium azide: a POISONOUS AND HAZARDOUS SUBSTANCE which should be handled by trained staff only.

## Applications

- Immunohistochemistry (Formalin/PFA-fixed paraffin-embedded sections)

Immunohistochemical staining (Formalin-fixed paraffin-embedded sections) of human colon with MKI67 monoclonal antibody, clone CL1234 (Cat # MAB15675) shows nuclear positivity in a subset of glandular cells.

## Gene Info — MKI67

<b>Entrez GeneID</b>	<a href="#">4288</a>
<b>Protein Accession#</b>	<a href="#">P46013</a>
<b>Gene Name</b>	MKI67
<b>Gene Alias</b>	KIA, Ki-67
<b>Gene Description</b>	antigen identified by monoclonal antibody Ki-67
<b>Omim ID</b>	<a href="#">176741</a>
<b>Gene Ontology</b>	<a href="#">Hyperlink</a>
<b>Gene Summary</b>	This gene encodes a nuclear protein that is associated with and may be necessary for cellular proliferation. Alternatively spliced transcript variants have been described. A related pseudogene exists on chromosome X. [provided by RefSeq]
<b>Other Designations</b>	OTTHUMP00000020739 proliferation-related Ki-67 antigen

## Disease

- [Alzheimer Disease](#)
- [Brain Ischemia](#)

- [Carcinoma](#)
- [Cardiovascular Diseases](#)
- [Coronary Disease](#)
- [Genetic Predisposition to Disease](#)
- [Head and Neck Neoplasms](#)
- [Myocardial Infarction](#)
- [Neoplasms](#)
- [Ovarian Neoplasms](#)
- [Recurrence](#)
- [Stroke](#)