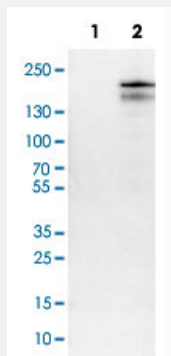


# KDM5B monoclonal antibody, clone CL1129

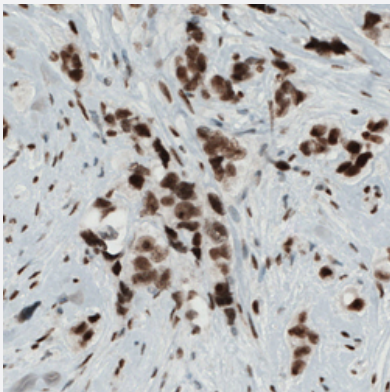
Catalog # MAB15669      Size 100 uL

## Applications



### Western Blot (Transfected lysate)

Western Blot analysis of Lane 1: negative control (vector only transfected HEK293T cell lysate) and Lane 2: over-expression lysate (co-expressed with a C-terminal myc-DDK tag in mammalian HEK293T cells) with KDM5B monoclonal antibody, clone CL1129 (Cat # MAB15669).



### Immunohistochemistry (Formalin/PFA-fixed paraffin-embedded sections)

Immunohistochemical staining (Formalin-fixed paraffin-embedded sections) of human breast cancer with KDM5B monoclonal antibody, clone CL1129 (Cat # MAB15669) shows strong nuclear immunoreactivity in tumor cells.

## Specification

<b>Product Description</b>	Mouse monoclonal antibody raised against partial recombinant human KDM5B.
<b>Immunogen</b>	Recombinant protein corresponding to human KDM5B.
<b>Epitope</b>	This antibody binds to an epitope located within the peptide sequence DGINSLERKLRRLER as determined by overlapping synthetic peptides.
<b>Sequence</b>	DGINSLERKLRRLEREGLSSEWERVKKMRTPKKKKIKLSHPKDMNNFKLERERSYELVRSLET HSLPSDTSYSEQEDSE
<b>Host</b>	Mouse

Reactivity	Human
Form	Liquid
Purification	Protein A purification
Isotype	IgG1
Recommend Usage	Immunohistochemistry (Formalin/PFA-fixed paraffin-embedded sections) (1:200-1:500) Western Blot (1:500-1:1000) The optimal working dilution should be determined by the end user.
Storage Buffer	In PBS, pH 7.2 (40% glycerol, 0.02% sodium azide).
Storage Instruction	Store at 4°C. For long term storage store at -20°C. Aliquot to avoid repeated freezing and thawing.
Note	This product contains sodium azide: a POISONOUS AND HAZARDOUS SUBSTANCE which should be handled by trained staff only.

## Applications

- Western Blot (Transfected lysate)

Western Blot analysis of Lane 1: negative control (vector only transfected HEK293T cell lysate) and Lane 2: over-expression lysate (co-expressed with a C-terminal myc-DDK tag in mammalian HEK293T cells) with KDM5B monoclonal antibody, clone CL1129 (Cat # MAB15669).

- Immunohistochemistry (Formalin/PFA-fixed paraffin-embedded sections)

Immunohistochemical staining (Formalin-fixed paraffin-embedded sections) of human breast cancer with KDM5B monoclonal antibody, clone CL1129 (Cat # MAB15669) shows strong nuclear immunoreactivity in tumor cells.

## Gene Info — KDM5B

Entrez GeneID	<a href="#">10765</a>
Protein Accession#	<a href="#">Q9UGL1</a>
Gene Name	KDM5B
Gene Alias	FLJ10538, FLJ12459, FLJ12491, FLJ16281, FLJ23670, KDM5B, PLU-1, PUT1, RBBP2H1A
Gene Description	jumonji, AT rich interactive domain 1B
Omim ID	<a href="#">605393</a>
Gene Ontology	<a href="#">Hyperlink</a>

## Gene Summary

O

## Other Designations

OTTHUMP00000038815|RBP2-like|putative DNA/chromatin binding motif|retinoblastoma-binding protein 2, homolog 1A

## Disease

- [Genetic Predisposition to Disease](#)
- [Hypertension](#)