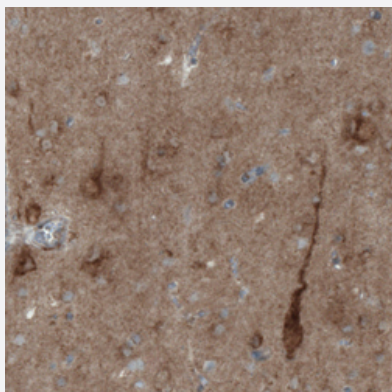


RHOT1 monoclonal antibody, clone CL1095

Catalog # MAB15665 Size 100 uL

Applications



Immunohistochemistry (Formalin/PFA-fixed paraffin-embedded sections)

Immunohistochemical staining (Formalin-fixed paraffin-embedded sections) of human cerebral cortex with RHOT1 monoclonal antibody, clone CL1095 (Cat # MAB15665) shows immunoreactivity in both neuronal cell bodies and neuropil.

Specification

Product Description	Mouse monoclonal antibody raised against partial recombinant human RHOT1.
Immunogen	Recombinant protein corresponding to human RHOT1.
Epitope	This antibody binds to an epitope located within the peptide sequence ERTDKDSRLP as determined by overlapping synthetic peptides.
Sequence	THVDYSEAEQSDEQLHQEISQANVICIVYAVNNKHSIDKVTSRWIPLINERTDKDSRLPLILVGNKSDLVEYSSMETILPIMNQYTEIE
Host	Mouse
Reactivity	Human
Form	Liquid
Purification	Protein A purification
Isotype	IgG1

Recommend Usage	Immunohistochemistry (Formalin/PFA-fixed paraffin-embedded sections) (1:200-1:500) The optimal working dilution should be determined by the end user.
Storage Buffer	In PBS, pH 7.2 (40% glycerol, 0.02% sodium azide).
Storage Instruction	Store at 4°C. For long term storage store at -20°C. Aliquot to avoid repeated freezing and thawing.
Note	This product contains sodium azide: a POISONOUS AND HAZARDOUS SUBSTANCE which should be handled by trained staff only.

Applications

- Immunohistochemistry (Formalin/PFA-fixed paraffin-embedded sections)

Immunohistochemical staining (Formalin-fixed paraffin-embedded sections) of human cerebral cortex with RHOT1 monoclonal antibody, clone CL1095 (Cat # MAB15665) shows immunoreactivity in both neuronal cell bodies and neuropil.

Gene Info — RHOT1

Entrez GeneID	55288
Protein Accession#	Q8IXI2
Gene Name	RHOT1
Gene Alias	ARHT1, FLJ11040, FLJ12633, MIRO-1
Gene Description	ras homolog gene family, member T1
Gene Ontology	Hyperlink
Gene Summary	O
Other Designations	mitochondrial Rho 1 rac-GTP binding protein-like protein

Publication Reference

- [DISC1-dependent Regulation of Mitochondrial Dynamics Controls the Morphogenesis of Complex Neuronal Dendrites.](#)

Norkett R, Modi S, Birsá N, Atkin TA, Ivankovic D, Pathania M, Trossbach SV, Korth C, Hirst WD, Kittler JT.
The Journal of Biological Chemistry 2016 Jan; 291(2):613.

Application: IP, PLA, WB, Human, SH-SY5Y cells

Disease

- [Tobacco Use Disorder](#)