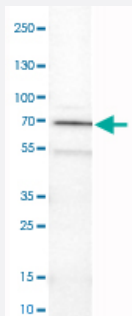


RHOT1 monoclonal antibody, clone CL1083

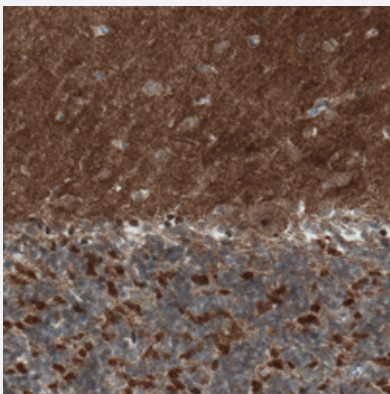
Catalog # MAB15664 Size 100 uL

Applications



Western Blot (Tissue lysate)

Western Blot analysis of human cerebral cortex tissue lysate with RHOT1 monoclonal antibody, clone CL1083 (Cat # MAB15664).



Immunohistochemistry (Formalin/PFA-fixed paraffin-embedded sections)

Immunohistochemical staining (Formalin-fixed paraffin-embedded sections) of human cerebellum with RHOT1 monoclonal antibody, clone CL1083 (Cat # MAB15664) shows strong positivity in neuropil of the molecular and granular cell layers, as well as in Purkinje cells.

Specification

Product Description	Mouse monoclonal antibody raised against partial recombinant human RHOT1.
Immunogen	Recombinant protein corresponding to human RHOT1.
Epitope	This antibody binds to an epitope located within the peptide sequence VTSRWIPLIN as determined by overlapping synthetic peptides.
Sequence	THVDYSEAEQSDEQLHQEISQANVICVYAVNNKHSIDKVTSRWIPLINERTDKDSRLPLILVGNKSD LVEYSSMETILPIMNQYTEIE
Host	Mouse

Reactivity	Human
Form	Liquid
Purification	Protein A purification
Isotype	IgG1
Recommend Usage	Immunohistochemistry (Formalin/PFA-fixed paraffin-embedded sections) (1:200-1:500) Western Blot (1:500-1:1000) The optimal working dilution should be determined by the end user.
Storage Buffer	In PBS, pH 7.2 (40% glycerol, 0.02% sodium azide).
Storage Instruction	Store at 4°C. For long term storage store at -20°C. Aliquot to avoid repeated freezing and thawing.
Note	This product contains sodium azide: a POISONOUS AND HAZARDOUS SUBSTANCE which should be handled by trained staff only.

Applications

- Western Blot (Tissue lysate)

Western Blot analysis of human cerebral cortex tissue lysate with RHOT1 monoclonal antibody, clone CL1083 (Cat # MAB15664).

- Immunohistochemistry (Formalin/PFA-fixed paraffin-embedded sections)

Immunohistochemical staining (Formalin-fixed paraffin-embedded sections) of human cerebellum with RHOT1 monoclonal antibody, clone CL1083 (Cat # MAB15664) shows strong positivity in neuropil of the molecular and granular cell layers, as well as in Purkinje cells.

Gene Info — RHOT1

Entrez GeneID	55288
Protein Accession#	Q8IXI2
Gene Name	RHOT1
Gene Alias	ARHT1, FLJ11040, FLJ12633, MIRO-1
Gene Description	ras homolog gene family, member T1
Gene Ontology	Hyperlink
Gene Summary	O

Other Designations

mitochondrial Rho 1|rac-GTP binding protein-like protein

Disease

- [Tobacco Use Disorder](#)