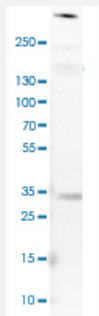


# ATRX monoclonal antibody, clone CL0537

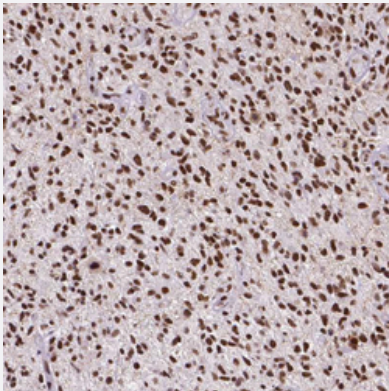
Catalog # MAB15638      Size 100 uL

## Applications



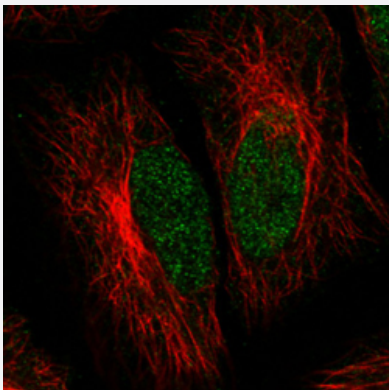
### Western Blot (Cell lysate)

Western Blot analysis of A-549 cell lysate with ATRX monoclonal antibody, clone CL0537 (Cat # MAB15638).



### Immunohistochemistry (Formalin/PFA-fixed paraffin-embedded sections)

Immunohistochemical staining (Formalin-fixed paraffin-embedded sections) of human glioma with ATRX monoclonal antibody, clone CL0537 (Cat # MAB15638) shows strong nuclear positivity in tumor cells.



### Immunofluorescence

Immunofluorescent staining of HeLa cells with ATRX monoclonal antibody, clone CL0537 (Cat # MAB15638) (Green) shows clear nuclear (without nucleoli) staining. Microtubule and nuclear probes are visualized in red and blue respectively (where available).

## Specification

<b>Product Description</b>	Mouse monoclonal antibody raised against partial recombinant human ATRX.
<b>Immunogen</b>	Recombinant protein corresponding to human ATRX.
<b>Sequence</b>	AAWAEYEAEEKKGLTMRFNIPGTNLPPVSFNSQTPYIPFNLGALSAMSNNQQLLEDLINQGREKVVEA TNSVTAVRIQPLEDIISAVWKENMNLSEAQVQALALSRQASQELDVKRREAYNDVLTKQQMLISC VQRILMNRR
<b>Host</b>	Mouse
<b>Reactivity</b>	Human
<b>Form</b>	Liquid
<b>Purification</b>	Protein A purification
<b>Isotype</b>	IgG1
<b>Recommend Usage</b>	Immunofluorescence (1-4 ug/mL) Immunohistochemistry (Formalin/PFA-fixed paraffin-embedded sections) (1:200-1:500) Western Blot (1:500-1:1000) The optimal working dilution should be determined by the end user.
<b>Storage Buffer</b>	In PBS, pH 7.2 (40% glycerol, 0.02% sodium azide).
<b>Storage Instruction</b>	Store at 4°C. For long term storage store at -20°C. Aliquot to avoid repeated freezing and thawing.
<b>Note</b>	This product contains sodium azide: a POISONOUS AND HAZARDOUS SUBSTANCE which should be handled by trained staff only.

## Applications

- Western Blot (Cell lysate)

Western Blot analysis of A-549 cell lysate with ATRX monoclonal antibody, clone CL0537 (Cat # MAB15638).

- Immunohistochemistry (Formalin/PFA-fixed paraffin-embedded sections)

Immunohistochemical staining (Formalin-fixed paraffin-embedded sections) of human glioma with ATRX monoclonal antibody, clone CL0537 (Cat # MAB15638) shows strong nuclear positivity in tumor cells.

- Immunofluorescence

Immunofluorescent staining of HeLa cells with ATRX monoclonal antibody, clone CL0537 (Cat # MAB15638) (Green) shows clear nuclear (without nucleoli) staining. Microtubule and nuclear probes are visualized in red and blue respectively (where available).

## Gene Info — ATRX

Entrez GeneID	<a href="#">546</a>
Protein Accession#	<a href="#">P46100</a>
Gene Name	ATRX
Gene Alias	ATR2, MGC2094, MRXHF1, RAD54, RAD54L, SFM1, SHS, XH2, XNP, ZNF-HX
Gene Description	alpha thalassemia/mental retardation syndrome X-linked (RAD54 homolog, S. cerevisiae)
Omim ID	<a href="#">300032</a> <a href="#">300448</a> <a href="#">301040</a> <a href="#">309580</a>
Gene Ontology	<a href="#">Hyperlink</a>
Gene Summary	The protein encoded by this gene contains an ATPase/helicase domain, and thus it belongs to the SWI/SNF family of chromatin remodeling proteins. The mutations of this gene are associated with an X-linked mental retardation (XLMR) syndrome most often accompanied by alpha-thalassemia (ATRX) syndrome. These mutations have been shown to cause diverse changes in the pattern of DNA methylation, which may provide a link between chromatin remodeling, DNA methylation, and gene expression in developmental processes. This protein is found to undergo cell cycle-dependent phosphorylation, which regulates its nuclear matrix and chromatin association, and suggests its involvement in the gene regulation at interphase and chromosomal segregation in mitosis. Multiple alternatively spliced transcript variants encoding distinct isoforms have been reported. [provided by RefSeq]
Other Designations	DNA dependent ATPase and helicase OTTHUMP00000024265 OTTHUMP00000062079 X-linked nuclear protein Zinc finger helicase helicase 2, X-linked transcriptional regulator ATRX

## Disease

- [Breast cancer](#)
- [Breast Neoplasms](#)
- [Genetic Predisposition to Disease](#)