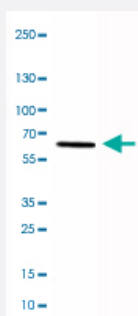


HDAC1 monoclonal antibody, clone CL0510

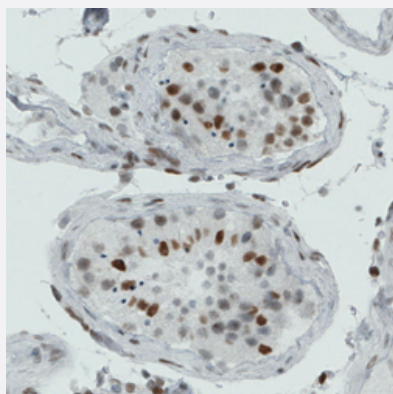
Catalog # MAB15637 Size 100 uL

Applications



Western Blot (Cell lysate)

Western Blot analysis of RT-4 cell lysate with HDAC1 monoclonal antibody, clone CL0510 (Cat # MAB15637).



Immunohistochemistry (Formalin/PFA-fixed paraffin-embedded sections)

Immunohistochemical staining (Formalin-fixed paraffin-embedded sections) of human testis with HDAC1 monoclonal antibody, clone CL0510 (Cat # MAB15637) shows strong nuclear immunoreactivity in the seminiferous ducts.

Specification

Product Description	Mouse monoclonal antibody raised against partial recombinant human HDAC1.
Immunogen	Recombinant protein corresponding to human HDAC1.
Epitope	This antibody binds to an epitope located within the peptide sequence EGGRKNSSNFKKAKR as determined by overlapping synthetic peptides.
Sequence	RIACEEEFSDSEEEGEGGRKNSSNFKKAKRVKTEDEKEKDPEEKKEVTEEEKTKEEKPEAKGV KE
Host	Mouse

Reactivity	Human
Form	Liquid
Purification	Protein A purification
Isotype	IgG1
Recommend Usage	Immunohistochemistry (Formalin/PFA-fixed paraffin-embedded sections) (1:500-1:1000) Western Blot (1:500-1:1000) The optimal working dilution should be determined by the end user.
Storage Buffer	In PBS, pH 7.2 (40% glycerol, 0.02% sodium azide).
Storage Instruction	Store at 4°C. For long term storage store at -20°C. Aliquot to avoid repeated freezing and thawing.
Note	This product contains sodium azide: a POISONOUS AND HAZARDOUS SUBSTANCE which should be handled by trained staff only.

Applications

- Western Blot (Cell lysate)

Western Blot analysis of RT-4 cell lysate with HDAC1 monoclonal antibody, clone CL0510 (Cat # MAB15637).

- Immunohistochemistry (Formalin/PFA-fixed paraffin-embedded sections)

Immunohistochemical staining (Formalin-fixed paraffin-embedded sections) of human testis with HDAC1 monoclonal antibody, clone CL0510 (Cat # MAB15637) shows strong nuclear immunoreactivity in the seminiferous ducts.

Gene Info — HDAC1

Entrez GeneID	3065
Protein Accession#	Q13547
Gene Name	HDAC1
Gene Alias	DKFZp686H12203, GON-10, HD1, RPD3, RPD3L1
Gene Description	histone deacetylase 1
Omim ID	601241
Gene Ontology	Hyperlink

Gene Summary

Histone acetylation and deacetylation, catalyzed by multisubunit complexes, play a key role in the regulation of eukaryotic gene expression. The protein encoded by this gene belongs to the histone deacetylase/acuc/apha family and is a component of the histone deacetylase complex. It also interacts with retinoblastoma tumor-suppressor protein and this complex is a key element in the control of cell proliferation and differentiation. Together with metastasis-associated protein-2, it deacetylates p53 and modulates its effect on cell growth and apoptosis. [provided by RefSeq]

Other Designations

OTTHUMP00000008745|reduced potassium dependency, yeast homolog-like 1

Pathway

- [Cell cycle](#)
- [Chronic myeloid leukemia](#)
- [Notch signaling pathway](#)
- [Pathways in cancer](#)

Disease

- [Asthma](#)
- [Cognition Disorders](#)
- [Genetic Predisposition to Disease](#)
- [Huntington disease](#)
- [Mental Status Schedule](#)
- [Neoplasms](#)
- [Ovarian cancer](#)
- [Ovarian Neoplasms](#)
- [Tobacco Use Disorder](#)