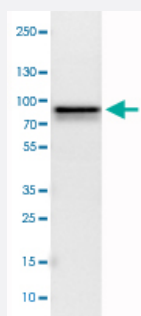


MTDH monoclonal antibody, clone CL0401

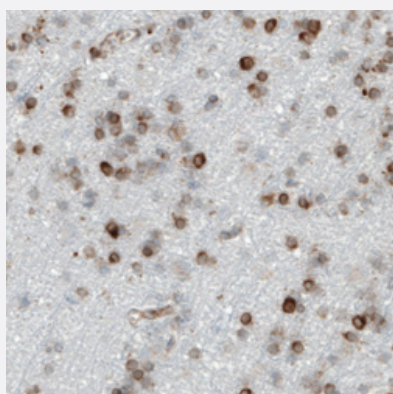
Catalog # MAB15628 Size 100 uL

Applications



Western Blot (Cell lysate)

Western Blot analysis of U-251 MG cell lysate with MTDH monoclonal antibody, clone CL0401 (Cat # MAB15628).



Immunohistochemistry (Formalin/PFA-fixed paraffin-embedded sections)

Immunohistochemical staining (Formalin-fixed paraffin-embedded sections) of human cerebral cortex with MTDH monoclonal antibody, clone CL0401 (Cat # MAB15628) shows moderate to strong cytoplasmic positivity in glial cells.

Specification

Product Description	Mouse monoclonal antibody raised against partial recombinant human MTDH.
Immunogen	Recombinant protein corresponding to human MTDH.
Sequence	RKTEPSAWSQDTGDANTNGKDWGRSWSDRSIFSGIGSTAEPVSQSTTSYQWDVSRNQPYIDD EWSGLNGLSSADPNSDWNAPAEWGNWVDEERASLLKSQEPIPDQKVSDDDKEKGEGALP TGKSKKKKKKKKKQGEDNSTAQD
Host	Mouse
Reactivity	Human

Form	Liquid
Purification	Protein A purification
Isotype	IgG1
Recommend Usage	Immunohistochemistry (Formalin/PFA-fixed paraffin-embedded sections) (1:500-1:1000) Western Blot (1:500-1:1000) The optimal working dilution should be determined by the end user.
Storage Buffer	In PBS, pH 7.2 (40% glycerol, 0.02% sodium azide).
Storage Instruction	Store at 4°C. For long term storage store at -20°C. Aliquot to avoid repeated freezing and thawing.
Note	This product contains sodium azide: a POISONOUS AND HAZARDOUS SUBSTANCE which should be handled by trained staff only.

Applications

- Western Blot (Cell lysate)

Western Blot analysis of U-251 MG cell lysate with MTDH monoclonal antibody, clone CL0401 (Cat # MAB15628).

- Immunohistochemistry (Formalin/PFA-fixed paraffin-embedded sections)

Immunohistochemical staining (Formalin-fixed paraffin-embedded sections) of human cerebral cortex with MTDH monoclonal antibody, clone CL0401 (Cat # MAB15628) shows moderate to strong cytoplasmic positivity in glial cells.

Gene Info — MTDH

Entrez GeneID	92140
Protein Accession#	Q86UE4
Gene Name	MTDH
Gene Alias	3D3, AEG-1, AEG1, LYRIC
Gene Description	metadherin
Omim ID	610323
Gene Ontology	Hyperlink
Other Designations	LYRIC/3D3 astrocyte elevated gene-1 metastasis adhesion protein

Disease

- [Genetic Predisposition to Disease](#)
- [Migraine Disorders](#)