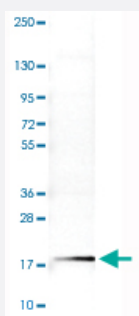


RBM3 monoclonal antibody, clone CL0296

Catalog # MAB15594

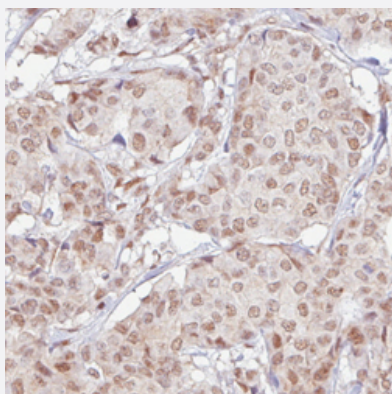
Size 100 uL

Applications



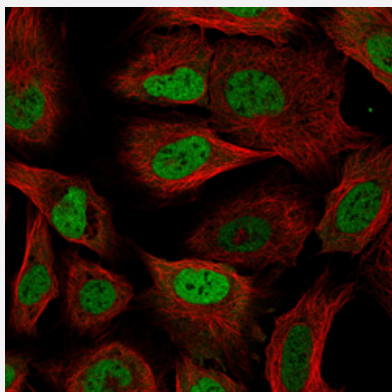
Western Blot (Cell lysate)

Western Blot analysis of RT-4 cell lysate with RBM3 monoclonal antibody, clone CL0296 (Cat # MAB15594).



Immunohistochemistry (Formalin/PFA-fixed paraffin-embedded sections)

Immunohistochemical staining (Formalin-fixed paraffin-embedded sections) of human breast cancer with RBM3 monoclonal antibody, clone CL0296 (Cat # MAB15594) shows moderate nuclear positivity in tumor cells.



Immunofluorescence

Immunofluorescent staining of U-2 OS cells with RBM3 monoclonal antibody, clone CL0296 (Cat # MAB15594) (Green) shows specific staining in the nucleoplasm. Microtubule and nuclear probes are visualized in red and blue, respectively (where available).

Specification

Product Description	Mouse monoclonal antibody raised against partial recombinant human RBM3.
Immunogen	Recombinant protein corresponding to human RBM3.
Sequence	DEQALDHFSSFGPISEVVVKDRETQRSRGFGFITFTNPEHASVAMRAMNGESLDGRQIRVDH AGKSARGTRGGGFGAHGRGRSYSRGGGDQGYGSGRYDSRPGGYGYGYGRSRDYNGRNQGGY DRYSGGNY
Host	Mouse
Reactivity	Human
Form	Liquid
Purification	Protein A purification
Isotype	IgG1
Recommend Usage	Immunofluorescence (1-4 ug/mL) Immunohistochemistry (Formalin/PFA-fixed paraffin-embedded sections) (1:500-1:1000) Western Blot (1:500-1:1000) The optimal working dilution should be determined by the end user.
Storage Buffer	In PBS, pH 7.2 (40% glycerol, 0.02% sodium azide).
Storage Instruction	Store at 4°C. For long term storage store at -20°C. Aliquot to avoid repeated freezing and thawing.
Note	This product contains sodium azide: a POISONOUS AND HAZARDOUS SUBSTANCE which should be handled by trained staff only.

Applications

- Western Blot (Cell lysate)

Western Blot analysis of RT-4 cell lysate with RBM3 monoclonal antibody, clone CL0296 (Cat # MAB15594).

- Immunohistochemistry (Formalin/PFA-fixed paraffin-embedded sections)

Immunohistochemical staining (Formalin-fixed paraffin-embedded sections) of human breast cancer with RBM3 monoclonal antibody, clone CL0296 (Cat # MAB15594) shows moderate nuclear positivity in tumor cells.

- Immunofluorescence

Immunofluorescent staining of U-2 OS cells with RBM3 monoclonal antibody, clone CL0296 (Cat # MAB15594) (Green) shows specific staining in the nucleoplasm. Microtubule and nuclear probes are visualized in red and blue, respectively (where available).

Gene Info — RBM3

Entrez GeneID [5935](#)

Protein Accession# [P98179](#)

Gene Name RBM3

Gene Alias IS1-RNPL, RNPL

Gene Description RNA binding motif (RNP1, RRM) protein 3

Omim ID [300027](#)

Gene Ontology [Hyperlink](#)

Gene Summary This gene is a member of the glycine-rich RNA-binding protein family and encodes a protein with one RNA recognition motif (RRM) domain. Expression of this gene is induced by cold shock and low oxygen tension. A pseudogene exists on chromosome 1. Multiple alternatively spliced transcript variants that are predicted to encode different isoforms have been characterized although some of these variants fit nonsense-mediated decay (NMD) criteria. [provided by RefSeq]

Other Designations OTTHUMP00000025800|OTTHUMP00000025802|RNA binding motif protein 3

Publication Reference

- [Podocalyxin-like and RNA-binding motif protein 3 are prognostic biomarkers in urothelial bladder cancer: a validity study.](#)

Boman K, Andersson G, Wennersten C, Nodin B, Ahlgren G, Jirstrom K.

Biomarker Research 2017 Mar; 5:10.

- [Evaluation of RNA-binding motif protein 3 expression in urothelial carcinoma of the bladder: an immunohistochemical study.](#)

Florianova L, Xu B, Traboulsi S, Elmansi H, Tanguay S, Aprikian A, Kassouf W, Brimo F.

World Journal of Surgical Oncology 2015 Nov; 13:317.

Application: IHC, Human, Human urothelial carcinoma

- [Low RBM3 protein expression correlates with clinical stage, prognostic classification and increased risk of treatment failure in testicular non-seminomatous germ cell cancer.](#)

Olofsson SE, Nodin B, Gaber A, Eberhard J, Uhlen M, Jirstrom K, Jerkeman M.

PLoS One 2015 Mar; 10(3):e0121300.

Application: IHC-P, Human, Human non-seminomatous germ cell cancer