

# ABL2 monoclonal antibody, clone 1H1B11

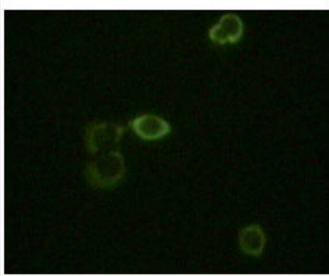
Catalog # MAB15257      Size 100 uL

## Applications



### Western Blot (Recombinant protein)

Western Blot analysis of truncated ABL2 recombinant protein.



### Immunofluorescence

Immunofluorescence staining of methanol-fixed HeLa cell.

## Specification

<b>Product Description</b>	Mouse monoclonal antibody raised against partial recombinant human ABL2.
<b>Immunogen</b>	Recombinant protein corresponding to human ABL2.
<b>Host</b>	Mouse
<b>Reactivity</b>	Human
<b>Form</b>	Liquid
<b>Purification</b>	Affinity purification

<b>Recommend Usage</b>	ELISA (1:10000) Immunofluorescence (1:200-1:1000) Western Blot (1:500-1:2000) The optimal working dilution should be determined by the end user.
<b>Storage Buffer</b>	In ascitic fluid (0.03% sodium azide).
<b>Storage Instruction</b>	Store at -20°C. Aliquot to avoid repeated freezing and thawing.
<b>Note</b>	This product contains sodium azide: a POISONOUS AND HAZARDOUS SUBSTANCE which should be handled by trained staff only.

## Applications

- Western Blot (Recombinant protein)  
Western Blot analysis of truncated ABL2 recombinant protein.
- Immunofluorescence  
Immunofluorescence staining of methanol-fixed HeLa cell.
- Enzyme-linked Immunoabsorbent Assay

## Gene Info — ABL2

<b>Entrez GeneID</b>	<a href="#">27</a>
<b>Protein Accession#</b>	<a href="#">P42684</a>
<b>Gene Name</b>	ABL2
<b>Gene Alias</b>	ABLL, ARG, FLJ22224, FLJ31718, FLJ41441
<b>Gene Description</b>	v-abl Abelson murine leukemia viral oncogene homolog 2 (arg, Abelson-related gene)
<b>Omim ID</b>	<a href="#">164690</a>
<b>Gene Ontology</b>	<a href="#">Hyperlink</a>
<b>Gene Summary</b>	This gene encodes a member of the Abelson family of nonreceptor tyrosine protein kinase. The protein is highly similar to the ABL1 protein, including the tyrosine kinase, SH2 and SH3 domains, and has a role in cytoskeletal rearrangements by its C-terminal F-actin- and microtubule-binding sequences. This gene is expressed in both normal and tumor cells, and is involved in translocation with the ETV6 gene in leukemia. Multiple alternatively spliced transcript variants encoding different protein isoforms have been found for this gene. [provided by RefSeq]

**Other Designations**

Abelson murine leukemia viral (v-abl) oncogene homolog 2|Abelson-related gene protein|OTTHU  
MP00000033139|arg tyrosine kinase|v-abl Abelson murine leukemia viral oncogene homolog 2

**Pathway**

- [ErbB signaling pathway](#)

**Disease**

- [Alzheimer disease](#)
- [Cardiovascular Diseases](#)
- [Diabetes Complications](#)
- [Diabetes Mellitus](#)
- [Edema](#)
- [Metabolic Syndrome X](#)
- [Neoplasms](#)
- [Osteoporosis](#)