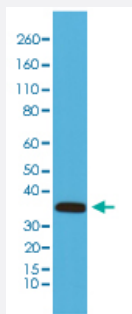


RecomAb™

CNN1 monoclonal antibody, clone RM262

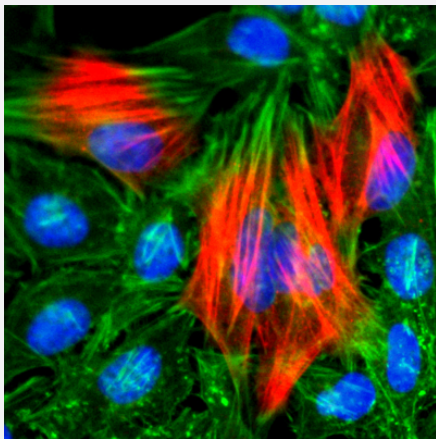
Catalog # MAB15133 Size 100 uL

Applications



Western Blot (Tissue lysate)

Western blot analysis of mouse heart tissue lysates with CNN1 monoclonal antibody, clone RM262 (Cat # MAB15133).



Immunocytochemistry

Immunocytochemistry staining of HeLa cells with CNN1 monoclonal antibody, clone RM262 (Cat # MAB15133) (Red). Actin filaments have been labeled with fluorescein phalloidin (Green), and nucleus stained with DAPI (Blue).

Specification

Product Description	Rabbit recombinant monoclonal antibody raised against of human CNN1.
Antibody Species	Rabbit
Immunogen	Original antibody is raised against a synthetic peptide corresponding to C-terminus of human CNN1.
Sequence	N/A
Reactivity	Human, Mouse

Form	Liquid
Purification	Protein A affinity purification
Isotype	IgG
Recommend Usage	Immunocytochemistry (1:100-1:200) Western Blot (1:1000-1:2000) The optimal working dilution should be determined by the end user.
Storage Buffer	In PBS (50% glycerol, 1% BSA, 0.09% sodium azide)
Storage Instruction	Store at -20°C. Aliquot to avoid repeated freezing and thawing.
Note	This product contains sodium azide: a POISONOUS AND HAZARDOUS SUBSTANCE which should be handled by trained staff only.

Applications

- Western Blot (Tissue lysate)

Western blot analysis of mouse heart tissue lysates with CNN1 monoclonal antibody, clone RM262 (Cat # MAB15133).

- Immunocytochemistry

Immunocytochemistry staining of HeLa cells with CNN1 monoclonal antibody, clone RM262 (Cat # MAB15133) (Red). Actin filaments have been labeled with fluorescein phalloidin (Green), and nucleus stained with DAPI (Blue).

Gene Info — CNN1

Entrez GeneID	1264
Protein Accession#	P51911
Gene Name	CNN1
Gene Alias	SMCC, Sm-Calp
Gene Description	calponin 1, basic, smooth muscle
Omim ID	600806
Gene Ontology	Hyperlink
Gene Summary	basic
Other Designations	calponins, basic

Disease

- [Cardiovascular Diseases](#)
- [Diabetes Mellitus](#)
- [Edema](#)