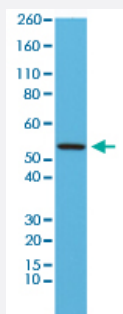


RecomAb™

DES monoclonal antibody, clone RM234

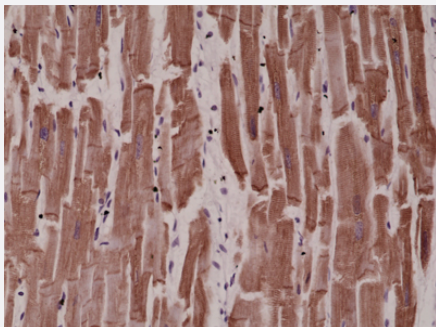
Catalog # MAB15124 Size 100 uL

Applications



Western Blot (Tissue lysate)

Western blot analysis of mouse heart tissue lysates with DES monoclonal antibody, clone RM234 (Cat # MAB15124) at a 1: 1,000 dilution, showed a band of DES (~54 kDa) expressed in mouse heart.



Immunohistochemistry (Formalin/PFA-fixed paraffin-embedded sections)

Immunohistochemical staining (Formalin-fixed paraffin-embedded sections) of human heart with DES monoclonal antibody, clone RM234 (Cat # MAB15124) at 1:4000 dilution.

Specification

Product Description	Rabbit recombinant monoclonal antibody raised against of human DES.
Antibody Species	Rabbit
Immunogen	Original antibody is raised against a synthetic peptide corresponding to internal region of human DES.
Sequence	N/A
Reactivity	Human, Mouse
Form	Liquid

Purification	Protein A affinity purification
Isotype	IgG
Recommend Usage	Immunohistochemistry (Formalin/PFA-fixed paraffin-embedded sections) (1:1000-1:4000) Western Blot (1:1000-1:2000) The optimal working dilution should be determined by the end user.
Storage Buffer	In PBS (50% glycerol, 1% BSA, 0.09% sodium azide)
Storage Instruction	Store at -20°C. Aliquot to avoid repeated freezing and thawing.
Note	This product contains sodium azide: a POISONOUS AND HAZARDOUS SUBSTANCE which should be handled by trained staff only.

Applications

- Western Blot (Tissue lysate)

Western blot analysis of mouse heart tissue lysates with DES monoclonal antibody, clone RM234 (Cat # MAB15124) at a 1:1,000 dilution, showed a band of DES (~54 kDa) expressed in mouse heart.

- Immunohistochemistry (Formalin/PFA-fixed paraffin-embedded sections)

Immunohistochemical staining (Formalin-fixed paraffin-embedded sections) of human heart with DES monoclonal antibody, clone RM234 (Cat # MAB15124) at 1:4000 dilution.

Gene Info — DES

Entrez GeneID	1674
Protein Accession#	P17661
Gene Name	DES
Gene Alias	CMD1I, CSM1, CSM2, FLJ12025, FLJ39719, FLJ41013, FLJ41793
Gene Description	desmin
Omim ID	125660 601419 604765
Gene Ontology	Hyperlink
Gene Summary	This gene encodes a muscle-specific class III intermediate filament. Homopolymers of this protein form a stable intracytoplasmic filamentous network connecting myofibrils to each other and to the plasma membrane. Mutations in this gene are associated with desmin-related myopathy, a familial cardiac and skeletal myopathy (CSM), and with distal myopathies. [provided by RefSeq]

Other Designations

OTTHUMP00000064865|intermediate filament protein

Pathway

- [Arrhythmogenic right ventricular cardiomyopathy \(ARVC\)](#)
- [Hypertrophic cardiomyopathy \(HCM\)](#)

Disease

- [Cardiomyopathy](#)
- [Cardiovascular Diseases](#)
- [Diabetes Mellitus](#)
- [Edema](#)