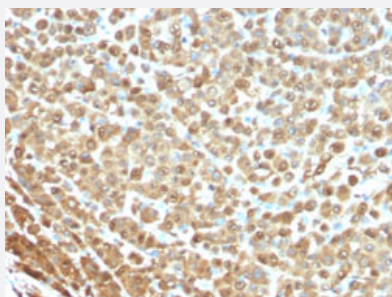


# S100A1 monoclonal antibody, clone S1/61

Catalog # MAB14975      Size 100 ug

## Applications



### Immunohistochemistry (Formalin/PFA-fixed paraffin-embedded sections)

Immunohistochemical staining (Formalin-fixed paraffin-embedded sections) of human melanoma with S100A1 monoclonal antibody, clone S1/61 (Cat # MAB14975).

## Specification

<b>Product Description</b>	Mouse monoclonal antibody raised against native human S100A1.
<b>Immunogen</b>	Native purified human S100 (conjugated with methylated BSA).
<b>Host</b>	Mouse
<b>Theoretical MW (kDa)</b>	10-12
<b>Reactivity</b>	Human
<b>Form</b>	Liquid
<b>Purification</b>	Protein A/G purification
<b>Isotype</b>	IgG1, kappa
<b>Recommend Usage</b>	Immunofluorescence (1-2 ug/mL) Immunohistochemistry (Formalin/PFA-fixed paraffin-embedded sections) (1-2 ug/mL) The optimal working dilution should be determined by the end user.
<b>Storage Buffer</b>	In 10 mM PBS.

**Storage Instruction**

Store at -20 to -80°C.  
Aliquot to avoid repeated freezing and thawing.

## Applications

- Immunohistochemistry (Formalin/PFA-fixed paraffin-embedded sections)

Immunohistochemical staining (Formalin-fixed paraffin-embedded sections) of human melanoma with S100A1 monoclonal antibody, clone S1/61 (Cat # MAB14975).

- Immunofluorescence

## Gene Info — S100A1

**Entrez GeneID** [6271](#)

**Protein Accession#** [P23297](#)

**Gene Name** S100A1

**Gene Alias** S100, S100-alpha, S100A

**Gene Description** S100 calcium binding protein A1

**Omim ID** [176940](#)

**Gene Ontology** [Hyperlink](#)

**Gene Summary** The protein encoded by this gene is a member of the S100 family of proteins containing 2 EF-hand calcium-binding motifs. S100 proteins are localized in the cytoplasm and/or nucleus of a wide range of cells, and involved in the regulation of a number of cellular processes such as cell cycle progression and differentiation. S100 genes include at least 13 members which are located as a cluster on chromosome 1q21. This protein may function in stimulation of Ca<sup>2+</sup>-induced Ca<sup>2+</sup> release, inhibition of microtubule assembly, and inhibition of protein kinase C-mediated phosphorylation. Reduced expression of this protein has been implicated in cardiomyopathies. [provided by RefSeq]

**Other Designations** OTTHUMP00000035100|S100 alpha|S100 calcium-binding protein A1|S100 protein, alpha polypeptide

## Publication Reference

- [New sites of human S-100 immunoreactivity detected with monoclonal antibodies.](#)

Vanstapel MJ, Gatter KC, de Wolf-Peeters C, Mason DY, Desmet VD.

American Journal of Clinical Pathology 1986 Feb; 85(2):160.

- [Production of monoclonal antibodies directed against antigenic determinants common to the alpha- and beta-chain of bovine brain S-100 protein.](#)

Vanstapel MJ, Peeters B, Cordell J, Heyns W, De Wolf-Peeters C, Desmet V, Mason D.

Laboratory Investigation 1985 Feb; 52(2):232.

## Disease

- [Breast cancer](#)
- [Breast Neoplasms](#)
- [Dermatitis](#)
- [DNA Damage](#)
- [Genetic Predisposition to Disease](#)