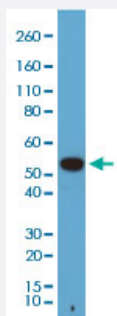


RecomAb™

# Alpha Tubulin monoclonal antibody, clone RM113 (Biotin)

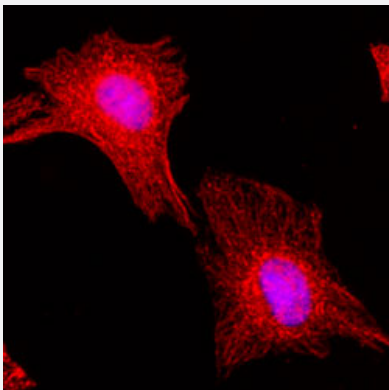
Catalog # MAB14961      Size 50 uL

## Applications



### Western Blot (Cell lysate)

Western blot analysis of A431 cell lysate with Alpha Tubulin monoclonal antibody, clone RM113 (Biotin) (Cat # MAB14961) at 1:1000 dilution.



### Immunocytochemistry

Immunocytochemistry staining of HeLa cells with Alpha Tubulin monoclonal antibody, clone RM113 (Biotin) (Cat # MAB14961) (Red) at 1:200 dilution. Blue: DAPI was used to stain the cell nuclei.

## Specification

<b>Product Description</b>	Rabbit recombinant monoclonal antibody raised against of Alpha Tubulin.
<b>Antibody Species</b>	Rabbit
<b>Immunogen</b>	Original antibody is raised against a synthetic peptide corresponding to C-terminus of human Alpha Tubulin.
<b>Sequence</b>	N/A
<b>Form</b>	Liquid

Conjugation	Biotin
Purification	Protein A purification
Isotype	IgG
Recommend Usage	ChIP (1:200) ELISA Flow Cytometry Immunocytochemistry (1:200) Immunohistochemistry (1:200) Immunoprecipitation (1:200) Western Blotting (1:1000) The optimal working dilution should be determined by the end user.
Storage Buffer	In PBS (50% glycerol, 1% BSA, 0.09% sodium azide)
Storage Instruction	Store at -20°C. Aliquot to avoid repeated freezing and thawing.
Note	This product contains sodium azide: a POISONOUS AND HAZARDOUS SUBSTANCE which should be handled by trained staff only.

## Applications

- ChIP
- Western Blot (Cell lysate)

Western blot analysis of A431 cell lysate with Alpha Tubulin monoclonal antibody, clone RM113 (Biotin) (Cat # MAB14961) at 1:1000 dilution.
- Immunohistochemistry
- Immunocytochemistry

Immunocytochemistry staining of HeLa cells with Alpha Tubulin monoclonal antibody, clone RM113 (Biotin) (Cat # MAB14961) (Red) at 1:200 dilution. Blue: DAPI was used to stain the cell nuclei.
- Immunoprecipitation
- Enzyme-linked Immunoabsorbent Assay
- Flow Cytometry