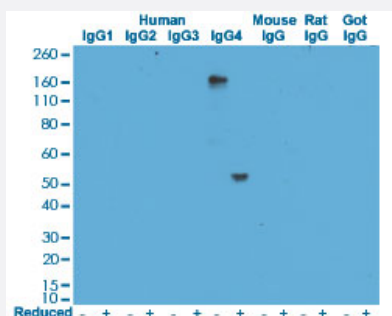


RecomAb™

Human IgG4 monoclonal antibody, clone RM120 (Biotin)

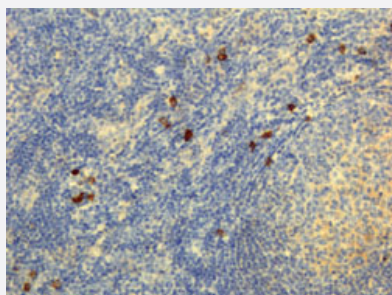
Catalog # MAB14959 Size 50 ug

Applications



Western Blot

Western blot analysis of human, mouse, rat, and goat IgG with Human IgG4 monoclonal antibody, clone RM120 (Biotin) (Cat # MAB14959) at 0.5 ug/mL working concentration.



Immunohistochemistry (Formalin/PFA-fixed paraffin-embedded sections)

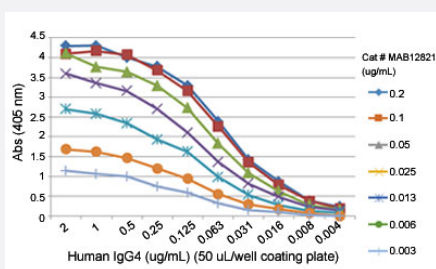
Immunohistochemical staining (Formalin-fixed paraffin-embedded sections) of human lymphoid tissue with Human IgG4 monoclonal antibody, clone RM120 (Biotin) (Cat # MAB14959).

Enzyme-linked Immunoabsorbent Assay

Sandwich ELISA using Human IgG4 monoclonal antibody, clone RM120 (Biotin) (Cat# MAB14959) as the capture antibody, and Human Ig light chain monoclonal antibody, clone RM129 (Biotin) (Cat# MAB12811) as the detection antibody, followed by an AP conjugated streptavidin.

Enzyme-linked Immunoabsorbent Assay

ELISA analysis of Human IgG4 monoclonal antibody, clone RM120 (Cat # MAB12821) at the following concentrations: 0.2 ug/mL, 0.1 ug/mL, 0.05 ug/mL, 0.025 ug/mL, 0.013 ug/mL, 0.006 ug/mL, 0.003 ug/mL. The plate was coated with 50 uL/well different amounts of human IgG4. An alkaline phosphatase conjugated anti-rabbit IgG as the secondary antibody.



Enzyme-linked Immunoabsorbent Assay

Sandwich ELISA using Human IgG4 monoclonal antibody, clone RM120 (Biotin) (Cat# MAB14959) as the capture antibody, and Human Ig light chain monoclonal antibody, clone RM129 (Biotin) (Cat# MAB12811) as the detection antibody, followed by an AP conjugated streptavidin.

Specification

Product Description	Rabbit recombinant monoclonal antibody raised against of human IgG4.
Antibody Species	Rabbit
Immunogen	Original antibody is raised against a synthetic peptide corresponding to the hinge region of human Ig G4.
Sequence	N/A
Reactivity	Human
Form	Liquid
Conjugation	Biotin
Purification	Protein A purification
Isotype	IgG
Recommend Usage	ELISA (0.05-0.2 ug/well for capture, 0.05-0.2 ug/mL for detection) Flow Cytometry Immunocytochemistry (1-10 ug/mL) Immunohistochemistry (Formalin/PFA-fixed paraffin-embedded sections) (1-10 ug/mL) Western Blotting (0.5-2 ug/mL) The optimal working dilution should be determined by the end user.
Storage Buffer	In PBS (50% glycerol, 1% BSA, 0.09% sodium azide)
Storage Instruction	Store at -20°C. Aliquot to avoid repeated freezing and thawing.
Note	This product contains sodium azide: a POISONOUS AND HAZARDOUS SUBSTANCE which should be handled by trained staff only.

Applications

- Western Blot

Western blot analysis of human, mouse, rat, and goat IgG with Human IgG4 monoclonal antibody, clone RM120 (Biotin) (Cat # MAB14959) at 0.5 ug/mL working concentration.

- Immunohistochemistry (Formalin/PFA-fixed paraffin-embedded sections)

Immunohistochemical staining (Formalin-fixed paraffin-embedded sections) of human lymphoid tissue with Human IgG4 monoclonal antibody, clone RM120 (Biotin) (Cat # MAB14959).

- Immunocytochemistry

- Enzyme-linked Immunoabsorbent Assay

Sandwich ELISA using Human IgG4 monoclonal antibody, clone RM120 (Biotin) (Cat# MAB14959) as the capture antibody, and Human Ig light chain monoclonal antibody, clone RM129 (Biotin) (Cat# MAB12811) as the detection antibody, followed by an AP conjugated streptavidin.

- Enzyme-linked Immunoabsorbent Assay

ELISA analysis of Human IgG4 monoclonal antibody, clone RM120 (Cat # MAB12821) at the following concentrations: 0.2 ug/mL, 0.1 ug/mL, 0.05 ug/mL, 0.025 ug/mL, 0.013 ug/mL, 0.006 ug/mL, 0.003 ug/mL. The plate was coated with 50 uL/well different amounts of human IgG4. An alkaline phosphatase conjugated anti-rabbit IgG as the secondary antibody.

- Enzyme-linked Immunoabsorbent Assay

Sandwich ELISA using Human IgG4 monoclonal antibody, clone RM120 (Biotin) (Cat# MAB14959) as the capture antibody, and Human Ig light chain monoclonal antibody, clone RM129 (Biotin) (Cat# MAB12811) as the detection antibody, followed by an AP conjugated streptavidin.

- Flow Cytometry

Gene Info — IGHG4

Entrez GeneID	3503
---------------	----------------------

Protein Accession#	P01861
--------------------	------------------------

Gene Name	IGHG4
-----------	-------

Gene Alias	MGC117419
------------	-----------

Gene Description	immunoglobulin heavy constant gamma 4 (G4m marker)
------------------	----------------------------------------------------

Omim ID	147130
---------	------------------------

Gene Ontology

[Hyperlink](#)

Other Designations

-