

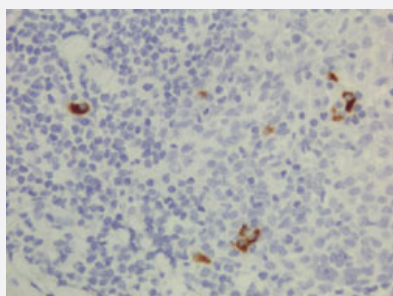
RecomAb™

# Human IgG3 monoclonal antibody, clone RM119 (Biotin)

Catalog # MAB14958

Size 50 ug

## Applications



### Immunohistochemistry (Formalin/PFA-fixed paraffin-embedded sections)

Immunohistochemical staining (Formalin-fixed paraffin-embedded sections) of human lymphoid tissue with Human IgG3 monoclonal antibody, clone RM119 (Biotin) (Cat # MAB14958).

### Enzyme-linked Immunoabsorbent Assay

Sandwich ELISA using Human IgG3 monoclonal antibody, clone RM119 (Biotin) (Cat# MAB14958) as the capture antibody (100ng/well), and Human Ig light chain monoclonal antibody, clone RM129 (Biotin) (Cat# MAB12811) as the detection antibody, followed by an HRP conjugated streptavidin.

### Enzyme-linked Immunoabsorbent Assay

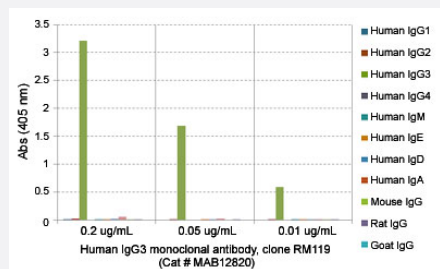
A titer ELISA using Human IgG3 monoclonal antibody, clone RM119 (Biotin) (Cat# MAB14958). The plate was coated with different amounts of human IgG3. A serial dilution of RM124 was used as the primary antibody. An alkaline phosphatase conjugated anti-rabbit IgG as the secondary antibody.

### Enzyme-linked Immunoabsorbent Assay

Sandwich ELISA using Human IgG3 monoclonal antibody, clone RM119 (Biotin) (Cat# MAB14958) as the capture antibody (100ng/well), and Human Ig light chain monoclonal antibody, clone RM129 (Biotin) (Cat# MAB12811) as the detection antibody, followed by an HRP conjugated streptavidin.

## Enzyme-linked Immunoabsorbent Assay

ELISA analysis of Human IgG3 monoclonal antibody, clone RM119 (Cat # MAB12820) at the following concentrations: 0.2 ug/mL, 0.05 ug/mL, 0.01 ug/mL. The plate was coated with 50 ng/well of different immunoglobulins and the result shows this antibody reacts to human IgG3; no cross reactivity human IgG1, IgG2, IgG4, IgE, IgA, or IgD, mouse IgG, rat IgG, or goat IgG. An alkaline phosphatase conjugated anti-rabbit IgG as the secondary antibody.



## Specification

Product Description	Rabbit recombinant monoclonal antibody raised against human IgG3.
Antibody Species	Rabbit
Immunogen	Original antibody is raised against human IgG3.
Sequence	N/A
Reactivity	Human
Form	Liquid
Conjugation	Biotin
Purification	Protein A purification
Isotype	IgG
Recommend Usage	ELISA (0.05-0.2 ug/well for capture, 0.05-0.2 ug/mL for detection) Flow Cytometry Immunocytochemistry (0.5-2 ug/mL) Immunohistochemistry (Formalin/PFA-fixed paraffin-embedded sections) (0.5-2 ug/mL) The optimal working dilution should be determined by the end user.
Storage Buffer	In PBS (50% glycerol, 1% BSA, 0.09% sodium azide)
Storage Instruction	Store at -20°C. Aliquot to avoid repeated freezing and thawing.
Note	This product contains sodium azide: a POISONOUS AND HAZARDOUS SUBSTANCE which should be handled by trained staff only.

## Applications

- Immunohistochemistry (Formalin/PFA-fixed paraffin-embedded sections)

Immunohistochemical staining (Formalin-fixed paraffin-embedded sections) of human lymphoid tissue with Human IgG3 monoclonal antibody, clone RM119 (Biotin) (Cat # MAB14958).

- Immunocytochemistry

- Enzyme-linked Immunoabsorbent Assay

Sandwich ELISA using Human IgG3 monoclonal antibody, clone RM119 (Biotin) (Cat# MAB14958) as the capture antibody (100ng/well), and Human Ig light chain monoclonal antibody, clone RM129 (Biotin) (Cat# MAB12811) as the detection antibody, followed by an HRP conjugated streptavidin.

- Enzyme-linked Immunoabsorbent Assay

A titer ELISA using Human IgG3 monoclonal antibody, clone RM119 (Biotin) (Cat# MAB14958). The plate was coated with different amounts of human IgG3. A serial dilution of RM124 was used as the primary antibody. An alkaline phosphatase conjugated anti-rabbit IgG as the secondary antibody.

- Enzyme-linked Immunoabsorbent Assay

Sandwich ELISA using Human IgG3 monoclonal antibody, clone RM119 (Biotin) (Cat# MAB14958) as the capture antibody (100ng/well), and Human Ig light chain monoclonal antibody, clone RM129 (Biotin) (Cat# MAB12811) as the detection antibody, followed by an HRP conjugated streptavidin.

- Enzyme-linked Immunoabsorbent Assay

ELISA analysis of Human IgG3 monoclonal antibody, clone RM119 (Cat # MAB12820) at the following concentrations: 0.2 ug/mL, 0.05 ug/mL, 0.01 ug/mL. The plate was coated with 50 ng/well of different immunoglobulins and the result shows this antibody reacts to human IgG3; no cross reactivity human IgG1, IgG2, IgG4, IgE, IgA, or IgD, mouse IgG, rat IgG, or goat IgG. An alkaline phosphatase conjugated anti-rabbit IgG as the secondary antibody.

- Flow Cytometry

## Gene Info — IGHG3

Entrez GeneID	<a href="#">3502</a>
Protein Accession#	<a href="#">P01860</a>
Gene Name	IGHG3
Gene Alias	DKFZp686H11213, FLJ39988, FLJ40036, FLJ40253, FLJ40587, FLJ40789, FLJ40834, IgG3, MGC45809

Gene Description	immunoglobulin heavy constant gamma 3 (G3m marker)
Omim ID	<a href="#">147120</a>
Gene Ontology	<a href="#">Hyperlink</a>
Other Designations	-

## Disease

- [Asthma](#)