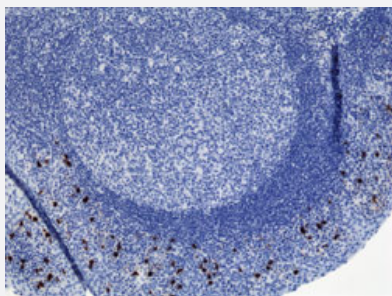


RecomAb™

Human IgA2 monoclonal antibody, clone RM125 (Biotin)

Catalog # MAB14953 Size 50 ug

Applications



Immunohistochemistry (Formalin/PFA-fixed paraffin-embedded sections)

Immunohistochemical staining (Formalin-fixed paraffin-embedded sections) of human tonsil with Human IgA2 monoclonal antibody, clone RM125 (Biotin) (Cat # MAB14953).

Enzyme-linked Immunoabsorbent Assay

Sandwich ELISA using Human IgA2 monoclonal antibody, clone RM125 (Biotin) (Cat# MAB14953) as the capture antibody (100ng/well), and Human Ig light chain monoclonal antibody, clone RM129 (Biotin) (Cat# MAB12811) as the detection antibody, followed by an alkaline phosphatase conjugated streptavidin.

Enzyme-linked Immunoabsorbent Assay

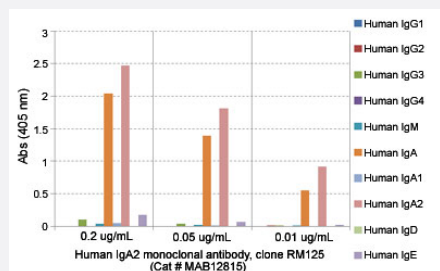
Sandwich ELISA using Human IgA2 monoclonal antibody, clone RM125 (Biotin) (Cat# MAB14953) as the capture antibody (100ng/well), and Human Ig light chain monoclonal antibody, clone RM129 (Biotin) (Cat# MAB12811) as the detection antibody, followed by an alkaline phosphatase conjugated streptavidin.

Enzyme-linked Immunoabsorbent Assay

ELISA analysis of Human IgA2 monoclonal antibody, clone RM125 (Cat # MAB12815) at the following concentrations: 0.2 ug/mL, 0.05 ug/mL, 0.01 ug/mL. The plate was coated with 50 ng/well of different immunoglobulins and the result shows this antibody reacts to human IgA2; no cross reactivity human IgA1, IgG, IgM, IgD, or IgE. An alkaline phosphatase conjugated anti-rabbit IgG as the secondary antibody.

Enzyme-linked Immunoabsorbent Assay

A titer ELISA using Human IgA2 monoclonal antibody, clone RM125 (Biotin) (Cat# MAB14953). The plate was coated with different amounts of human IgA2. A serial dilution of Cat# MAB14953 was used as the primary antibody. An alkaline phosphatase conjugated anti-rabbit IgG as the secondary antibody.



Specification

Product Description	Rabbit recombinant monoclonal antibody raised against human IgA2.
Antibody Species	Rabbit
Immunogen	Original antibody is raised against human IgA2.
Sequence	N/A
Reactivity	Human
Form	Liquid
Conjugation	Biotin
Purification	Protein A purification
Isotype	IgG
Recommend Usage	ELISA (0.05-0.2 ug/well for capture, 0.05-0.2 ug/mL for detection) Flow Cytometry Immunocytochemistry (0.5-2 ug/mL) Immunohistochemistry (Formalin/PFA-fixed paraffin-embedded sections) (0.1-1 ug/mL) The optimal working dilution should be determined by the end user.
Storage Buffer	In PBS (50% glycerol, 1% BSA, 0.09% sodium azide)

Storage Instruction

Store at -20°C.
Aliquot to avoid repeated freezing and thawing.

Note

This product contains sodium azide: a POISONOUS AND HAZARDOUS SUBSTANCE which should be handled by trained staff only.

Applications

- Immunohistochemistry (Formalin/PFA-fixed paraffin-embedded sections)

Immunohistochemical staining (Formalin-fixed paraffin-embedded sections) of human tonsil with Human IgA2 monoclonal antibody, clone RM125 (Biotin) (Cat # MAB14953).

- Immunocytochemistry

- Enzyme-linked Immunoabsorbent Assay

Sandwich ELISA using Human IgA2 monoclonal antibody, clone RM125 (Biotin) (Cat# MAB14953) as the capture antibody (100ng/well), and Human Ig light chain monoclonal antibody, clone RM129 (Biotin) (Cat# MAB12811) as the detection antibody, followed by an alkaline phosphatase conjugated streptavidin.

- Enzyme-linked Immunoabsorbent Assay

Sandwich ELISA using Human IgA2 monoclonal antibody, clone RM125 (Biotin) (Cat# MAB14953) as the capture antibody (100ng/well), and Human Ig light chain monoclonal antibody, clone RM129 (Biotin) (Cat# MAB12811) as the detection antibody, followed by an alkaline phosphatase conjugated streptavidin.

- Enzyme-linked Immunoabsorbent Assay

ELISA analysis of Human IgA2 monoclonal antibody, clone RM125 (Cat # MAB12815) at the following concentrations: 0.2 ug/mL, 0.05 ug/mL, 0.01 ug/mL. The plate was coated with 50 ng/well of different immunoglobulins and the result shows this antibody reacts to human IgA2; no cross reactivity human IgA1, IgG, IgM, IgD, or IgE. An alkaline phosphatase conjugated anti-rabbit IgG as the secondary antibody.

- Enzyme-linked Immunoabsorbent Assay

A titer ELISA using Human IgA2 monoclonal antibody, clone RM125 (Biotin) (Cat# MAB14953). The plate was coated with different amounts of human IgA2. A serial dilution of Cat# MAB14953 was used as the primary antibody. An alkaline phosphatase conjugated anti-rabbit IgG as the secondary antibody.

- Flow Cytometry

Gene Info — IGHA2

Entrez GeneID[3494](#)**Protein Accession#**[P01877](#)

Gene Name	IGHA2
Gene Alias	-
Gene Description	immunoglobulin heavy constant alpha 2 (A2m marker)
Omim ID	147000
Gene Ontology	Hyperlink
Other Designations	-