

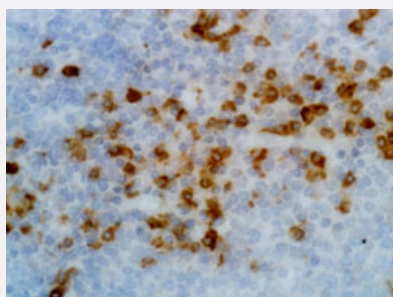
RecomAb™

Human Ig kappa light chain monoclonal antibody, clone RM126 (Biotin)

Catalog # MAB14949

Size 50 ug

Applications



Immunohistochemistry (Formalin/PFA-fixed paraffin-embedded sections)

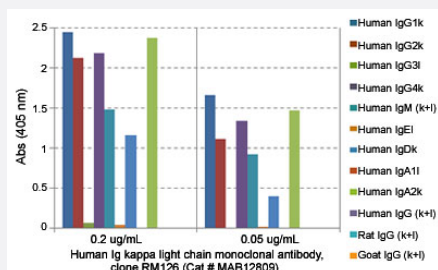
Immunohistochemical staining (Formalin-fixed paraffin-embedded sections) of human tonsil with Human Ig kappa light chain monoclonal antibody, clone RM126 (Biotin) (Cat # MAB14949).

Enzyme-linked Immunoabsorbent Assay

ELISA analysis of Human Ig kappa light chain monoclonal antibody, clone RM126 (Cat # MAB12809) at the following concentrations: 0.2 ug/mL, 0.05 ug/mL. The plate was coated with 50 ng/well of different immunoglobulins and the result shows this antibody reacts to the kappa light chain of human immunoglobulins; no cross reactivity with the lambda light chain, mouse IgG, rat IgG, or goat IgG. An alkaline phosphatase conjugated anti-rabbit IgG as the secondary antibody.

Enzyme-linked Immunoabsorbent Assay

A titer ELISA using Human Ig kappa light chain monoclonal antibody, clone RM126 (Biotin) (Cat# MAB14949). The plate was coated with different amounts of human IgG4κ. A serial dilution of Cat# MAB14949 was used as the primary antibody. An alkaline phosphatase conjugated anti-rabbit IgG as the secondary antibody.



Specification

| | |
|----------------------------|---|
| Product Description | Rabbit recombinant monoclonal antibody raised against human Ig kappa light chain. |
| Antibody Species | Rabbit |
| Immunogen | Original antibody is raised against mouse IgG. |
| Sequence | N/A |
| Reactivity | Human |
| Form | Liquid |
| Conjugation | Biotin |
| Purification | Protein A purification |
| Isotype | IgG |
| Recommend Usage | ELISA (0.05-0.2 ug/mL) Flow Cytometry Immunocytochemistry (0.5-2 ug/mL) Immunohistochemistry (Formalin/PFA-fixed paraffin-embedded sections) (0.5-2 ug/mL) The optimal working dilution should be determined by the end user. |
| Storage Buffer | In PBS (50% glycerol, 1% BSA, 0.09% sodium azide) |
| Storage Instruction | Store at -20°C. Aliquot to avoid repeated freezing and thawing. |
| Note | This product contains sodium azide: a POISONOUS AND HAZARDOUS SUBSTANCE which should be handled by trained staff only. |

Applications

- Immunohistochemistry (Formalin/PFA-fixed paraffin-embedded sections)

Immunohistochemical staining (Formalin-fixed paraffin-embedded sections) of human tonsil with Human Ig kappa light chain monoclonal antibody, clone RM126 (Biotin) (Cat # MAB14949).

- Immunocytochemistry

- Enzyme-linked Immunoabsorbent Assay

ELISA analysis of Human Ig kappa light chain monoclonal antibody, clone RM126 (Cat # MAB12809) at the following concentrations: 0.2 ug/mL, 0.05 ug/mL. The plate was coated with 50 ng/well of different immunoglobulins and the result shows this antibody reacts to the kappa light chain of human immunoglobulins; no cross reactivity with the lambda light chain, mouse IgG, rat IgG, or goat IgG. An alkaline phosphatase conjugated anti-rabbit IgG as the secondary antibody.

- Enzyme-linked Immunoabsorbent Assay

A titer ELISA using Human Ig kappa light chain monoclonal antibody, clone RM126 (Biotin) (Cat# MAB14949). The plate was coated with different amounts of human IgG4κ. A serial dilution of Cat# MAB14949 was used as the primary antibody. An alkaline phosphatase conjugated anti-rabbit IgG as the secondary antibody.

- Flow Cytometry

Gene Info — IGKC

| | |
|--------------------|--|
| Entrez GeneID | 3514 |
| Protein Accession# | P01834 |
| Gene Name | IGKC |
| Gene Alias | HCAK1, Km, MGC111575, MGC62011, MGC72072, MGC88770, MGC88771, MGC88809 |
| Gene Description | immunoglobulin kappa constant |
| Omim ID | 147200 |
| Gene Ontology | Hyperlink |
| Other Designations | - |

Disease

- [Dermatomyositis](#)
- [Genetic Predisposition to Disease](#)
- [Helicobacter Infections](#)
- [Polymyositis](#)
- [Purpura](#)
- [Sarcoidosis](#)