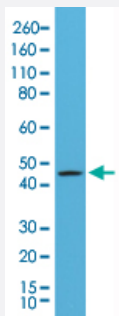


RecomAb™

KRT20 monoclonal antibody, clone RM283

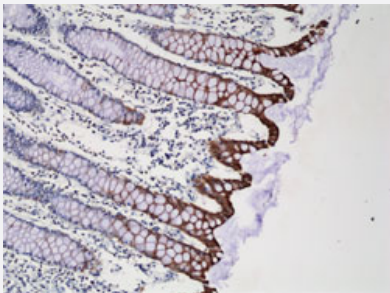
Catalog # MAB14930 Size 100 uL

Applications



Western Blot (Cell lysate)

Western Blot analysis of A431 cell lysate with KRT20 monoclonal antibody, clone RM283 (Cat # MAB14930).



Immunohistochemistry (Formalin/PFA-fixed paraffin-embedded sections)

Immunohistochemical staining (Formalin-fixed paraffin-embedded sections) of human colon with KRT20 monoclonal antibody, clone RM283 (Cat # MAB14930).

Specification

Product Description	Rabbit recombinant monoclonal antibody raised against of human KRT20.
Antibody Species	Rabbit
Immunogen	Original antibody is raised against a synthetic peptide corresponding to C-terminus of human KRT20.
Sequence	N/A
Reactivity	Human
Form	Liquid

Purification	Protein A purification
Isotype	IgG
Recommend Usage	Immunohistochemistry (Formalin/PFA-fixed paraffin-embedded sections) (1:100-1:250) Western Blotting (1:1000-1:2000) The optimal working dilution should be determined by the end user.
Storage Buffer	In PBS (50% glycerol, 1% BSA, 0.09% sodium azide)
Storage Instruction	Store at -20°C. Aliquot to avoid repeated freezing and thawing.
Note	This product contains sodium azide: a POISONOUS AND HAZARDOUS SUBSTANCE which should be handled by trained staff only.

Applications

- Western Blot (Cell lysate)

Western Blot analysis of A431 cell lysate with KRT20 monoclonal antibody, clone RM283 (Cat # MAB14930).

- Immunohistochemistry (Formalin/PFA-fixed paraffin-embedded sections)

Immunohistochemical staining (Formalin-fixed paraffin-embedded sections) of human colon with KRT20 monoclonal antibody, clone RM283 (Cat # MAB14930).

Gene Info — KRT20

Entrez GeneID	54474
Protein Accession#	P35900
Gene Name	KRT20
Gene Alias	CD20, CK20, K20, KRT21, MGC35423
Gene Description	keratin 20
Omim ID	608218
Gene Ontology	Hyperlink

Gene Summary

The protein encoded by this gene is a member of the keratin family. The keratins are intermediate filament proteins responsible for the structural integrity of epithelial cells and are subdivided into cytokeratins and hair keratins. The type I cytokeratins consist of acidic proteins which are arranged in pairs of heterotypic keratin chains. This cytokeratin is a major cellular protein of mature enterocytes and goblet cells and is specifically expressed in the gastric and intestinal mucosa. The type I cytokeratin genes are clustered in a region of chromosome 17q12-q21. [provided by RefSeq]

Other Designations

cytokeratin 20|keratin, type I cytoskeletal 20

Disease

- [Genetic Predisposition to Disease](#)
- [Growth Disorders](#)