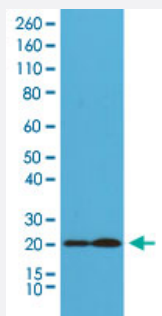


RecomAb™

DIABLO monoclonal antibody, clone RM271

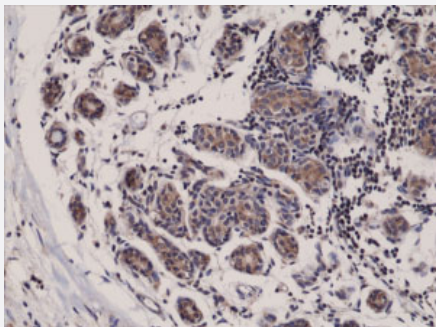
Catalog # MAB14915 Size 100 uL

Applications



Western Blot (Cell lysate)

Western Blot (Cell lysate) analysis of HeLa cell (1) and MCF-7 cell (2) with DIABLO monoclonal antibody, clone RM271 (Cat # MAB14915).



Immunohistochemistry (Formalin/PFA-fixed paraffin-embedded sections)

Immunohistochemical staining (Formalin-fixed paraffin-embedded sections) of human breast cancer with DIABLO monoclonal antibody, clone RM271 (Cat # MAB14915).

Specification

Product Description	Rabbit recombinant monoclonal antibody raised against of human DIABLO.
Antibody Species	Rabbit
Immunogen	Original antibody is raised against a synthetic peptide corresponding to the C-terminus of human DIABLO (Diablo homolog, mitochondrial).
Sequence	N/A
Reactivity	Human
Form	Liquid

Purification	Protein A affinity purification
Isotype	IgG
Recommend Usage	Immunohistochemistry (Formalin/PFA-fixed paraffin-embedded sections) (1:500-1:1000) Western Blot (1:1000-1:2000) The optimal working dilution should be determined by the end user.
Storage Buffer	In PBS (50% glycerol, 1% BSA, 0.09% sodium azide)
Storage Instruction	Store at -20°C. Aliquot to avoid repeated freezing and thawing.
Note	This product contains sodium azide: a POISONOUS AND HAZARDOUS SUBSTANCE which should be handled by trained staff only.

Applications

- Western Blot (Cell lysate)

Western Blot (Cell lysate) analysis of HeLa cell (1) and MCF-7 cell (2) with DIABLO monoclonal antibody, clone RM271 (Cat # MAB14915).

- Immunohistochemistry (Formalin/PFA-fixed paraffin-embedded sections)

Immunohistochemical staining (Formalin-fixed paraffin-embedded sections) of human breast cancer with DIABLO monoclonal antibody, clone RM271 (Cat # MAB14915).

Gene Info — DIABLO

Entrez GeneID	56616
Gene Name	DIABLO
Gene Alias	DIABLO-S, FLJ10537, FLJ25049, SMAC, SMAC3
Gene Description	diablo homolog (Drosophila)
Omim ID	605219
Gene Ontology	Hyperlink
Gene Summary	This gene encodes an inhibitor of apoptosis protein (IAP)-binding protein. The encoded mitochondrial protein enters the cytosol when cells undergo apoptosis, and it moderates the caspase inhibition of IAPs. Multiple polyadenylation sites have been found for this gene. Four alternatively spliced transcript variants have been described for this gene, with two of them encoding different isoforms and the other two probably not encoding a protein. [provided by RefSeq]

Other Designations

0610041G12Rik|diablo|direct IAP-binding protein with low pI|mitochondrial Smac protein|second mitochondria-derived activator of caspase

Disease

- [Cardiovascular Diseases](#)
- [Diabetes Mellitus](#)
- [Edema](#)