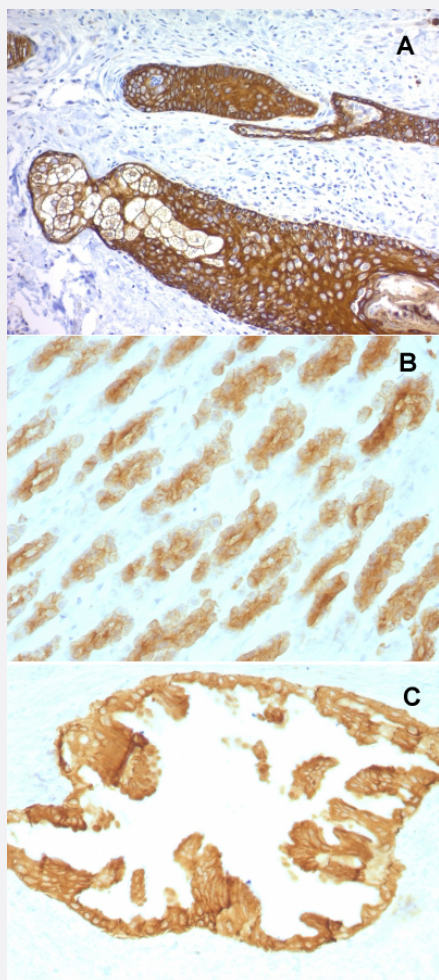


KRT76 monoclonal antibody, clone KRTH/1076

Catalog # MAB14645 Size 100 ug

Applications



Immunohistochemistry (Formalin/PFA-fixed paraffin-embedded sections)

Immunohistochemical staining (Formalin-fixed paraffin-embedded sections) of (A) human skin (B) rat stomach and (C) rat oviduct with KRT76 monoclonal antibody, clone KRTH/1076 (Cat # MAB14645).

Specification

Product Description	Mouse monoclonal antibody raised against full length recombinant human KRT76.
Immunogen	Recombinant protein corresponding to full length human KRT76.
Host	Mouse

Theoretical MW (kDa)	67,64,59,58,56,52
Reactivity	Human, Rat
Specificity	This antibody recognizes basic (Type II or HMW) cytokeratins, which include 67 kDa (CK1); 64 kDa (CK3); 59 kDa (CK4); 58 kDa (CK5); 56 kDa (CK6); 52 kDa (CK8).
Form	Liquid
Purification	Protein A/G purification
Isotype	IgG1, kappa
Recommend Usage	Flow Cytometry (0.5-1 ug/million cells in 0.1 mL) Immunofluorescence (1-2 ug/mL) Immunohistochemistry (Formalin/PFA-fixed paraffin-embedded sections) (0.25-0.5 ug/mL) Western Blot (0.5-1 ug/mL) The optimal working dilution should be determined by the end user.
Storage Buffer	In 10 mM PBS (0.05% BSA and 0.05% azide).
Storage Instruction	Store at 4°C.
Note	This product contains sodium azide: a POISONOUS AND HAZARDOUS SUBSTANCE which should be handled by trained staff only.

Applications

- Western Blot
- Immunohistochemistry (Formalin/PFA-fixed paraffin-embedded sections)
Immunohistochemical staining (Formalin-fixed paraffin-embedded sections) of (A) human skin (B) rat stomach and (C) rat oviduct with KRT76 monoclonal antibody, clone KRTH/1076 (Cat # MAB14645).
- Immunofluorescence
- Flow Cytometry

Gene Info — KRT76

Entrez GeneID	51350
Protein Accession#	Q01546
Gene Name	KRT76

Gene Alias	HUMCYT2A, KRT2B, KRT2P
Gene Description	keratin 76
Gene Ontology	Hyperlink
Gene Summary	Keratins are intermediate filament proteins responsible for the structural integrity of epithelial cells and are subdivided into epithelial keratins and hair keratins. The type II keratins are clustered in a region of chromosome 12q13. [provided by RefSeq]
Other Designations	cytokeratin 2 keratin 2p

Publication Reference

- [Immunolocalization of keratin polypeptides in human epidermis using monoclonal antibodies.](#)
J Woodcock-Mitchell, R Eichner, W G Nelson, T T Sun.
The Journal of Cell Biology 1982 Nov; 95(2 Pt 1):580.
- [Correlation of specific keratins with different types of epithelial differentiation: monoclonal antibody studies.](#)
S C Tseng, M J Jarvinen, W G Nelson, J W Huang, J Woodcock-Mitchell, T T Sun.
Cell 1982 Sep; 30(2):361.