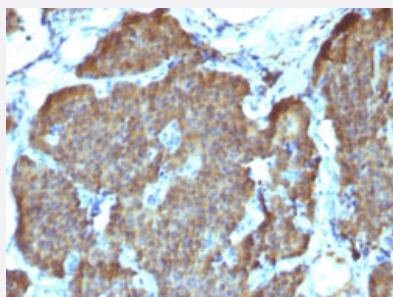


ENO2 monoclonal antibody, clone SPM347

Catalog # MAB14515 Size 100 ug

Applications



Immunohistochemistry (Formalin/PFA-fixed paraffin-embedded sections)

Immunohistochemical staining (Formalin-fixed paraffin-embedded sections) of human pheochromocytoma with ENO2 monoclonal antibody, clone SPM347 (Cat # MAB14515).

Specification

Product Description	Mouse monoclonal antibody raised against synthetic peptide of human ENO2.
Immunogen	A synthetic peptide corresponding to amino acids 416-433 of human ENO2.
Host	Mouse
Theoretical MW (kDa)	~50
Reactivity	Human
Form	Liquid
Purification	Protein A/G purification
Isotype	IgG2b
Recommend Usage	Flow Cytometry (0.5-1 ug/10 ⁶ cells) Immunofluorescence (1-2 ug/mL) Immunohistochemistry (Formalin/PFA-fixed paraffin-embedded sections) (0.1-0.2 ug/mL) Western Blotting (0.5-1 ug/mL) The optimal working dilution should be determined by the end user.
Storage Buffer	In 10 mM PBS (0.05% BSA, 0.05% sodium azide).

Storage Instruction

Store at 4°C.

Note

This product contains sodium azide: a POISONOUS AND HAZARDOUS SUBSTANCE which should be handled by trained staff only.

Applications

- Western Blot
- Immunohistochemistry (Formalin/PFA-fixed paraffin-embedded sections)

Immunohistochemical staining (Formalin-fixed paraffin-embedded sections) of human pheochromocytoma with ENO2 monoclonal antibody, clone SPM347 (Cat # MAB14515).
- Immunofluorescence
- Flow Cytometry

Gene Info — ENO2

Entrez GeneID
[2026](#)
Protein Accession#
[P09104](#)
Gene Name

ENO2

Gene Alias

NSE

Gene Description

enolase 2 (gamma, neuronal)

Omim ID
[131360](#)
Gene Ontology
[Hyperlink](#)
Gene Summary

This gene encodes one of the three enolase isoenzymes found in mammals. This isoenzyme, a homodimer, is found in mature neurons and cells of neuronal origin. A switch from alpha enolase to gamma enolase occurs in neural tissue during development in rats and primates. [provided by RefSeq]

Other Designations

2-phospho-D-glycerate hydrolyase|enolase 2|neural enolase|neuron specific gamma enolase|neuron-specific enolase

Publication Reference

- [DNA sequences encoding enolase are remarkably conserved from yeast to mammals.](#)

Verma M, Dutta SK.

Life Sciences 1994 Jun; 55(12):893.

Pathway

- [Biosynthesis of alkaloids derived from histidine and purine](#)
- [Biosynthesis of alkaloids derived from ornithine](#)
- [Biosynthesis of alkaloids derived from shikimate pathway](#)
- [Biosynthesis of alkaloids derived from terpenoid and polyketide](#)
- [Biosynthesis of phenylpropanoids](#)
- [Biosynthesis of plant hormones](#)
- [Biosynthesis of terpenoids and steroids](#)
- [Glycolysis / Gluconeogenesis](#)
- [Metabolic pathways](#)
- [RNA degradation](#)

Disease

- [Alzheimer disease](#)
- [Cerebral Amyloid Angiopathy](#)
- [Genetic Predisposition to Disease](#)
- [Neuroblastoma](#)
- [Schizophrenia](#)