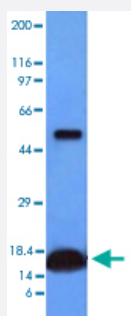


CYCS monoclonal antibody, clone CYCS/1010

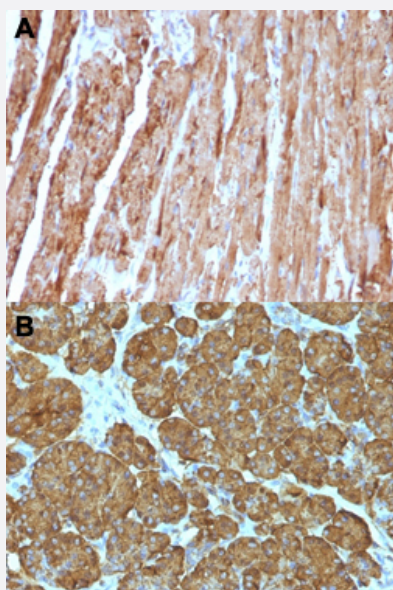
Catalog # MAB14395 Size 100 ug

Applications



Western Blot (Tissue lysate)

Western Blot analysis of human heart tissue lysate with CYCS monoclonal antibody, clone CYCS/1010 (Cat # MAB14395).



Immunohistochemistry (Formalin/PFA-fixed paraffin-embedded sections)

Immunohistochemical staining (Formalin-fixed paraffin-embedded sections) of human heart (A) and human pancreas (B) with CYCS monoclonal antibody, clone CYCS/1010 (Cat # MAB14395).

Specification

Product Description	Mouse monoclonal antibody raised against full length recombinant human CYCS.
Immunogen	Recombinant protein corresponding to full length human CYCS.
Host	Mouse

Theoretical MW (kDa)	15
Reactivity	Human
Form	Liquid
Purification	Protein A/G purification
Isotype	IgG2b, kappa
Recommend Usage	Flow Cytometry (0.5-1 ug/10 ⁶ cells in 0.1 mL) Immunofluorescence (0.5-1 ug/mL) Immunohistochemistry (Formalin/PFA-fixed paraffin-embedded sections) (0.25-0.5 ug/mL) Western Blot (0.5-1 ug/mL) The optimal working dilution should be determined by the end user.
Storage Buffer	In 1 mM PBS (0.05% BSA, 0.05% sodium azide).
Storage Instruction	Store at 4°C.
Note	This product contains sodium azide: a POISONOUS AND HAZARDOUS SUBSTANCE which should be handled by trained staff only.

Applications

- Western Blot (Tissue lysate)

Western Blot analysis of human heart tissue lysate with CYCS monoclonal antibody, clone CYCS/1010 (Cat # MAB14395).

- Immunohistochemistry (Formalin/PFA-fixed paraffin-embedded sections)

Immunohistochemical staining (Formalin-fixed paraffin-embedded sections) of human heart (A) and human pancreas (B) with CYCS monoclonal antibody, clone CYCS/1010 (Cat # MAB14395).

- Immunofluorescence

- Flow Cytometry

Gene Info — CYCS

Entrez GeneID	54205
Protein Accession#	P99999
Gene Name	CYCS

Gene Alias	CYC, HCS
Gene Description	cytochrome c, somatic
Omim ID	123970
Gene Ontology	Hyperlink
Gene Summary	<p>This gene encodes cytochrome c, a component of the electron transport chain in mitochondria. The heme group of cytochrome c accepts electrons from the b-c1 complex and transfers electrons to the cytochrome oxidase complex. Cytochrome c is also involved in initiation of apoptosis. Upon release of cytochrome c to the cytoplasm, the protein binds apoptotic protease activating factor which activates the apoptotic initiator procaspase 9. Many cytochrome c pseudogenes exist, scattered throughout the human genome. [provided by RefSeq]</p>
Other Designations	cytochrome c

Pathway

- [Amyotrophic lateral sclerosis \(ALS\)](#)
- [Apoptosis](#)
- [Colorectal cancer](#)
- [p53 signaling pathway](#)
- [Pathways in cancer](#)
- [Small cell lung cancer](#)

Disease

- [Thrombocytopenia](#)