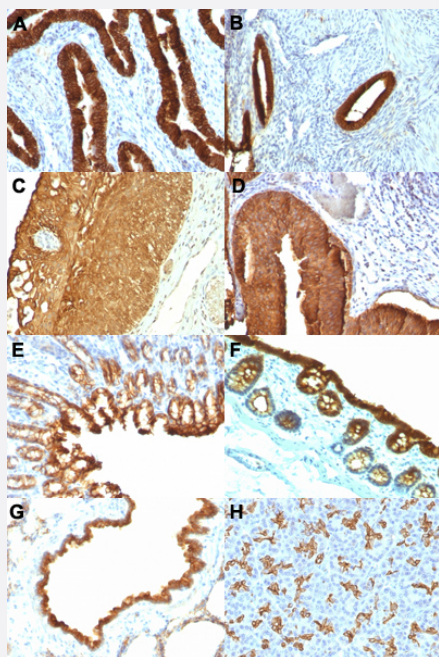


KRT19 monoclonal antibody, clone KRT19/800

Catalog # MAB14347 Size 100 ug

Applications



Immunohistochemistry (Formalin/PFA-fixed paraffin-embedded sections)

Immunohistochemical staining (Formalin-fixed paraffin-embedded sections) of human ovarian carcinoma (A), human endometrial carcinoma (B), human cervical carcinoma (C), human bladder carcinoma (D), rat stomach (E), rat colon (F), rat lung (G) and human pancreas (H) with KRT19 monoclonal antibody, clone KRT19/800 (Cat # MAB14347).

Specification

Product Description	Mouse monoclonal antibody raised against full length recombinant human KRT19.
Immunogen	Recombinant protein corresponding to full length human KRT19.
Host	Mouse
Theoretical MW (kDa)	40
Reactivity	Human, Rat
Form	Liquid
Purification	Protein A/G purification

Isotype	IgG1, kappa
Recommend Usage	Flow Cytometry (0.5-1 ug/10 ⁶ cells in 0.1 mL) Immunofluorescence (1-2 ug/mL) Immunohistochemistry (Formalin/PFA-fixed paraffin-embedded sections) (0.5-1 ug/mL) The optimal working dilution should be determined by the end user.
Storage Buffer	In 10 mM PBS (0.05% BSA, 0.05% sodium azide).
Storage Instruction	Store at 4°C.
Note	This product contains sodium azide: a POISONOUS AND HAZARDOUS SUBSTANCE which should be handled by trained staff only.

Applications

- Immunohistochemistry (Formalin/PFA-fixed paraffin-embedded sections)

Immunohistochemical staining (Formalin-fixed paraffin-embedded sections) of human ovarian carcinoma (A), human endometrial carcinoma (B), human cervical carcinoma (C), human bladder carcinoma (D), rat stomach (E), rat colon (F), rat lung (G) and human pancreas (H) with KRT19 monoclonal antibody, clone KRT19/800 (Cat # MAB14347).

- Immunofluorescence
- Flow Cytometry

Gene Info — KRT19

Entrez GeneID	3880
Protein Accession#	P08727
Gene Name	KRT19
Gene Alias	CK19, K19, K1CS, MGC15366
Gene Description	keratin 19
Omim ID	148020
Gene Ontology	Hyperlink

Gene Summary

The protein encoded by this gene is a member of the keratin family. The keratins are intermediate filament proteins responsible for the structural integrity of epithelial cells and are subdivided into cytokeratins and hair keratins. The type I cytokeratins consist of acidic proteins which are arranged in pairs of heterotypic keratin chains. Unlike its related family members, this smallest known acidic cytokeratin is not paired with a basic cytokeratin in epithelial cells. It is specifically expressed in the periderm, the transiently superficial layer that envelopes the developing epidermis. The type I cytokeratins are clustered in a region of chromosome 17q12-q21. [provided by RefSeq]

Other Designations

40-kDa keratin intermediate filament|cytokeratin 19|keratin, type I cytoskeletal 19|keratin, type I, 40-kd

Disease

- [Liver Cirrhosis](#)