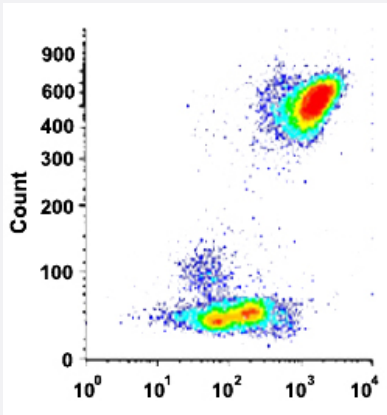


CD59 monoclonal antibody, clone VJ1/12,2 (PE)

Catalog # MAB13955 Size 5 x 100 reactions

Applications



Flow Cytometry

Flow cytometric analysis of human normal whole blood with CD59 monoclonal antibody, clone VJ1/12,2 (PE) (Cat # MAB13955).

Specification

Product Description	Mouse monoclonal antibody raised against human CD59.
Immunogen	TNF activated HUVEC cells.
Host	Mouse
Theoretical MW (kDa)	18-20
Reactivity	Human
Form	Liquid
Conjugation	PE
Purification	Protein A/G purification
Purity	>90%
Isotype	IgG2a

Recommend Usage	Flow Cytometry (20 μ L/ 10^6 cells) The optimal working dilution should be determined by the end user.
Storage Buffer	In PBS, pH 7.4 (protein stabilizer, 0.09% sodium azide).
Storage Instruction	Store in the dark at 4°C. Avoid prolonged exposure to light.
Note	This product contains sodium azide: a POISONOUS AND HAZARDOUS SUBSTANCE which should be handled by trained staff only.

Applications

- Flow Cytometry

Flow cytometric analysis of human normal whole blood with CD59 monoclonal antibody, clone VJ1/12,2 (PE) (Cat # MAB13955).

Gene Info — CD59

Entrez GeneID	966
Protein Accession#	P13987
Gene Name	CD59
Gene Alias	16.3A5, 1F5, EJ16, EJ30, EL32, FLJ38134, FLJ92039, G344, HRF-20, HRF20, MAC-IP, MAC1 F, MEM43, MGC2354, MIC11, MIN1, MIN2, MIN3, MIRL, MSK21, p18-20
Gene Description	CD59 molecule, complement regulatory protein
Omim ID	107271
Gene Ontology	Hyperlink
Gene Summary	This gene encodes a cell surface glycoprotein that regulates complement-mediated cell lysis, and it is involved in lymphocyte signal transduction. This protein is a potent inhibitor of the complement membrane attack complex, whereby it binds complement C8 and/or C9 during the assembly of this complex, thereby inhibiting the incorporation of multiple copies of C9 into the complex, which is necessary for osmolytic pore formation. This protein also plays a role in signal transduction pathways in the activation of T cells. Mutations in this gene cause CD59 deficiency, a disease resulting in hemolytic anemia and thrombosis, and which causes cerebral infarction. Multiple alternatively spliced transcript variants, which encode the same protein, have been identified for this gene. [provided by RefSeq]
Other Designations	20 kDa homologous restriction factor CD59 antigen CD59 antigen p18-20 (antigen identified by monoclonal antibodies 16.3A5, EJ16, EJ30, EL32 and G344) CD59 glycoprotein Ly-6-like protein T cell-activating protein human leukocyte antigen MIC11 lymphocytic a

Pathway

- [Complement and coagulation cascades](#)
- [Hematopoietic cell lineage](#)

Disease

- [Genetic Predisposition to Disease](#)
- [Lymphoma](#)
- [Macular Degeneration](#)