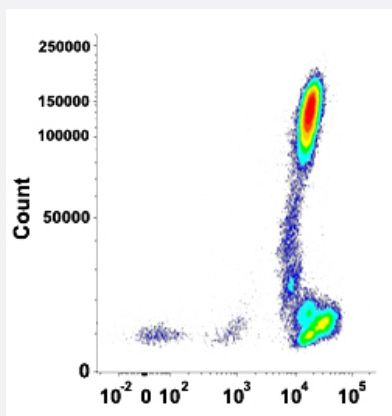


# SPN monoclonal antibody, clone TP1/36 (PE)

Catalog # MAB13916      Size 5 x 100 reactions

## Applications



### Flow Cytometry

Flow cytometric analysis of human normal whole blood with SPN monoclonal antibody, clone TP1/36 (PE) (Cat # MAB13916).

## Specification

**Product Description** Mouse monoclonal antibody raised against native human SPN.

**Immunogen** Native purified SPN from myeloblastic KG1 cells.

**Host** Mouse

**Theoretical MW (kDa)** 95-115

**Reactivity** Human

**Form** Liquid

**Conjugation** PE

**Purification** Protein A/G purification

**Purity** >90%

**Isotype** IgG1

Recommend Usage	Flow Cytometry (20 uL/10 <sup>6</sup> cells) The optimal working dilution should be determined by the end user.
Storage Buffer	In PBS, pH 7.4 (protein stabilizer, 0.09% sodium azide).
Storage Instruction	Store in the dark at 4°C. Avoid prolonged exposure to light.
Note	This product contains sodium azide: a POISONOUS AND HAZARDOUS SUBSTANCE which should be handled by trained staff only.

## Applications

- Flow Cytometry

Flow cytometric analysis of human normal whole blood with SPN monoclonal antibody, clone TP1/36 (PE) (Cat # MAB13916).

## Gene Info — SPN

Entrez GeneID	<a href="#">6693</a>
Protein Accession#	<a href="#">P16150</a>
Gene Name	SPN
Gene Alias	CD43, GPL115, LSN
Gene Description	sialophorin
Omim ID	<a href="#">182160</a>
Gene Ontology	<a href="#">Hyperlink</a>
Gene Summary	Sialophorin (leukosialin) is a major sialoglycoprotein on the surface of human T lymphocytes, monocytes, granulocytes, and some B lymphocytes, which appears to be important for immune function and may be part of a physiologic ligand-receptor complex involved in T-cell activation.[supplied by OMIM]
Other Designations	leukosialin sialophorin (gpL115, leukosialin, CD43) sialophorin (leukosialin, CD43)

## Pathway

- [Cell adhesion molecules \(CAMs\)](#)

## Disease

- [Kidney Failure](#)