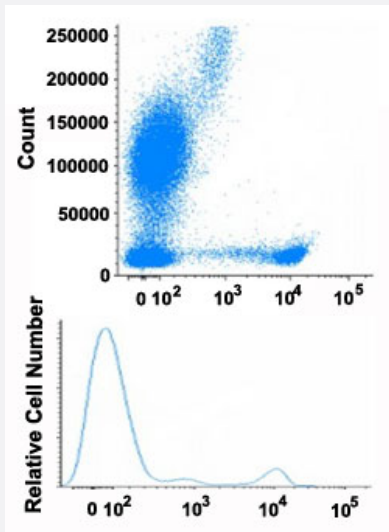


CD8A monoclonal antibody, clone 143-44 (CF-Blue)

Catalog # MAB13765 Size 100 Reactions

Applications



Flow Cytometry

Flow cytometric analysis of human normal whole blood with CD8A monoclonal antibody, clone 143-44 (CF-Blue) (Cat # MAB13765).

Specification

Product Description	Mouse monoclonal antibody raised against native human CD8A.
Immunogen	T-lymphocyte differentiation antigen.
Host	Mouse
Theoretical MW (kDa)	32
Reactivity	Human
Form	Liquid
Conjugation	CF-Blue
Purification	Protein A/G purification
Purity	>90%

Isotype	IgG1
Recommend Usage	Flow Cytometry (5 uL/10 ⁶ cells) The optimal working dilution should be determined by the end user.
Storage Buffer	In PBS, pH 7.4 (protein stabilizer, 0.09% sodium azide).
Storage Instruction	Store in the dark at 4°C. Avoid prolonged exposure to light.
Note	This product contains sodium azide: a POISONOUS AND HAZARDOUS SUBSTANCE which should be handled by trained staff only.

Applications

- Flow Cytometry

Flow cytometric analysis of human normal whole blood with CD8A monoclonal antibody, clone 143-44 (CF-Blue) (Cat # MAB13765).

Gene Info — CD8A

Entrez GeneID	925
Protein Accession#	P01732
Gene Name	CD8A
Gene Alias	CD8, Leu2, MAL, p32
Gene Description	CD8a molecule
Omim ID	186910 608957
Gene Ontology	Hyperlink
Gene Summary	The CD8 antigen is a cell surface glycoprotein found on most cytotoxic T lymphocytes that mediates efficient cell-cell interactions within the immune system. The CD8 antigen acts as a coreceptor with the T-cell receptor on the T lymphocyte to recognize antigens displayed by an antigen presenting cell (APC) in the context of class I MHC molecules. The coreceptor functions as either a homodimer composed of two alpha chains, or as a heterodimer composed of one alpha and one beta chain. Both alpha and beta chains share significant homology to immunoglobulin variable light chains. This gene encodes the CD8 alpha chain isoforms. Multiple transcript variants encoding different isoforms have been found for this gene. [provided by RefSeq]
Other Designations	CD8 antigen alpha polypeptide CD8 antigen, alpha polypeptide (p32) Leu2 T-lymphocyte antigen OKT8 T-cell antigen T cell co-receptor T-cell antigen Leu2 T-cell surface glycoprotein CD8 alpha chain T-lymphocyte differentiation antigen T8/Leu-2 T8 T-cell ant

Pathway

- [Antigen processing and presentation](#)
- [Cell adhesion molecules \(CAMs\)](#)
- [Hematopoietic cell lineage](#)
- [Primary immunodeficiency](#)
- [T cell receptor signaling pathway](#)