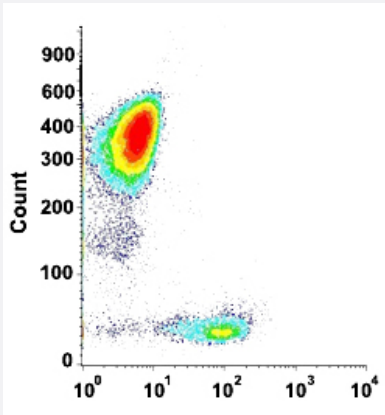


# CD7 monoclonal antibody, clone HIT7 (CF-Blue)

Catalog # MAB13758      Size 100 Reactions

## Applications



### Flow Cytometry

Flow cytometric analysis of human peripheral blood lymphocytes with CD7 monoclonal antibody, clone HIT7 (CF-Blue) (Cat # MAB13758).

## Specification

**Product Description** Mouse monoclonal antibody raised against human CD7.

**Immunogen** PBMCs and tonsil cells.

**Host** Mouse

**Theoretical MW (kDa)** 40

**Reactivity** Human

**Form** Liquid

**Conjugation** CF-Blue

**Purification** Protein A/G purification

**Purity** >90%

**Isotype** IgG1

Recommend Usage	Flow Cytometry (5 uL/10 <sup>6</sup> cells) The optimal working dilution should be determined by the end user.
Storage Buffer	In PBS, pH 7.4 (protein stabilizer, 0.09% sodium azide).
Storage Instruction	Store in the dark at 4°C. Avoid prolonged exposure to light.
Note	This product contains sodium azide: a POISONOUS AND HAZARDOUS SUBSTANCE which should be handled by trained staff only.

## Applications

- Flow Cytometry

Flow cytometric analysis of human peripheral blood lymphocytes with CD7 monoclonal antibody, clone HIT7 (CF-Blue) (Cat # MAB13758).

## Gene Info — CD7

Entrez GeneID	<a href="#">924</a>
Protein Accession#	<a href="#">P09564</a>
Gene Name	CD7
Gene Alias	GP40, LEU-9, TP41, Tp40
Gene Description	CD7 molecule
Omim ID	<a href="#">186820</a>
Gene Ontology	<a href="#">Hyperlink</a>
Gene Summary	This gene encodes a transmembrane protein which is a member of the immunoglobulin superfamily. This protein is found on thymocytes and mature T cells. It plays an essential role in T-cell interactions and also in T-cell/B-cell interaction during early lymphoid development. [provided by RefSeq]
Other Designations	CD7 antigen CD7 antigen (p41) T-cell antigen CD7 T-cell leukemia antigen p41 protein

## Pathway

- [Hematopoietic cell lineage](#)