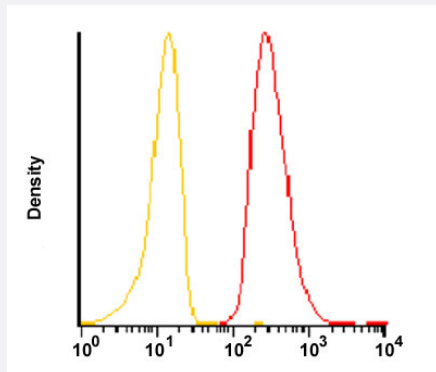


CD1A monoclonal antibody, clone HI149 (Biotin)

Catalog # MAB13669 Size 100 ug

Applications



Flow Cytometry

Flow cytometric analysis of MOLT-4 cells with CD1A monoclonal antibody, clone HI149 (Biotin) (Cat # MAB13669).

Specification

Product Description	Mouse monoclonal antibody raised against native human CD1A.
Immunogen	Native purified human CD1A.
Host	Mouse
Theoretical MW (kDa)	49
Reactivity	Human
Form	Liquid
Conjugation	Biotin
Purification	Protein A/G purification
Purity	> 90%
Isotype	IgG1

Recommend Usage

Flow Cytometry (1 ug/10⁶ cells)
The optimal working dilution should be determined by the end user.

Storage Buffer

In PBS, pH 7.4 (protein stabilizer, 0.09% sodium azide).

Storage Instruction

Store in the dark at 4°C.

Note

This product contains sodium azide: a POISONOUS AND HAZARDOUS SUBSTANCE which should be handled by trained staff only.

Applications

- Flow Cytometry

Flow cytometric analysis of MOLT-4 cells with CD1A monoclonal antibody, clone HI149 (Biotin) (Cat # MAB13669).

Gene Info — CD1A

Entrez GeneID

[909](#)

Protein Accession#

[P06126](#)

Gene Name

CD1A

Gene Alias

CD1, FCB6, HTA1, R4, T6

Gene Description

CD1a molecule

Omim ID

[188370](#)

Gene Ontology

[Hyperlink](#)

Gene Summary

This gene encodes a member of the CD1 family of transmembrane glycoproteins, which are structurally related to the major histocompatibility complex (MHC) proteins and form heterodimers with beta-2-microglobulin. The CD1 proteins mediate the presentation of primarily lipid and glycolipid antigens of self or microbial origin to T cells. The human genome contains five CD1 family genes organized in a cluster on chromosome 1. The CD1 family members are thought to differ in their cellular localization and specificity for particular lipid ligands. The protein encoded by this gene localizes to the plasma membrane and to recycling vesicles of the early endocytic system. Alternatively spliced transcript variants have been observed, but their biological validity has not been determined. [provided by RefSeq]

Other Designations

CD1A antigen|CD1A antigen, a polypeptide|OTTHUMP00000018907|T-cell surface antigen T6/Lu-6|T-cell surface glycoprotein CD1a|cluster of differentiation 1 A|cortical thymocyte antigen CD1A|differentiation antigen CD1-alpha-3|epidermal dendritic cell marker

Pathway

- [Hematopoietic cell lineage](#)

Disease

- [Campylobacter Infections](#)
- [Genetic Predisposition to Disease](#)
- [Guillain-Barre Syndrome](#)
- [Lung Diseases](#)
- [Mycobacterium Infections](#)
- [Polyradiculoneuropathy](#)