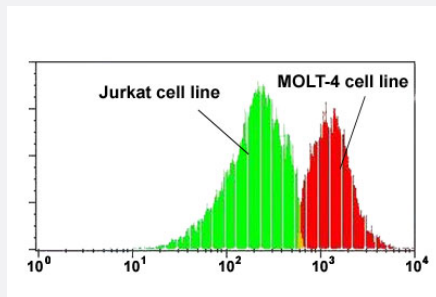


# CD1A monoclonal antibody, clone HI149 (APC)

Catalog # MAB13667      Size 100 Reactions

## Applications



### Flow Cytometry

Flow cytometric analysis of Jurkat (green) and MOLT-4 (red) cells with CD1A monoclonal antibody, clone HI149 (APC) (Cat # MAB13667).

## Specification

**Product Description** Mouse monoclonal antibody raised against native human CD1A.

**Immunogen** Native purified human CD1A.

**Host** Mouse

**Theoretical MW (kDa)** 49

**Reactivity** Human

**Form** Liquid

**Conjugation** APC

**Purification** Protein A/G purification

**Purity** > 90%

**Isotype** IgG1

**Recommend Usage** Flow Cytometry (20  $\mu$ L/ $10^6$  cells)  
The optimal working dilution should be determined by the end user.

Storage Buffer	In PBS, pH 7.4 (protein stabilizer, 0.09% sodium azide).
Storage Instruction	Store in the dark at 4°C.
Note	This product contains sodium azide: a POISONOUS AND HAZARDOUS SUBSTANCE which should be handled by trained staff only.

## Applications

- Flow Cytometry

Flow cytometric analysis of Jurkat (green) and MOLT-4 (red) cells with CD1A monoclonal antibody, clone HI149 (APC) (Cat # MAB13667).

## Gene Info — CD1A

Entrez GeneID	<a href="#">909</a>
Protein Accession#	<a href="#">P06126</a>
Gene Name	CD1A
Gene Alias	CD1, FCB6, HTA1, R4, T6
Gene Description	CD1a molecule
Omim ID	<a href="#">188370</a>
Gene Ontology	<a href="#">Hyperlink</a>

Gene Summary	This gene encodes a member of the CD1 family of transmembrane glycoproteins, which are structurally related to the major histocompatibility complex (MHC) proteins and form heterodimers with beta-2-microglobulin. The CD1 proteins mediate the presentation of primarily lipid and glycolipid antigens of self or microbial origin to T cells. The human genome contains five CD1 family genes organized in a cluster on chromosome 1. The CD1 family members are thought to differ in their cellular localization and specificity for particular lipid ligands. The protein encoded by this gene localizes to the plasma membrane and to recycling vesicles of the early endocytic system. Alternatively spliced transcript variants have been observed, but their biological validity has not been determined. [provided by RefSeq]
--------------	---

Other Designations	CD1A antigen CD1A antigen, a polypeptide OTTHUMP00000018907 T-cell surface antigen T6/L eu-6 T-cell surface glycoprotein CD1a cluster of differentiation 1 A cortical thymocyte antigen CD1 A differentiation antigen CD1-alpha-3 epidermal dendritic cell marker
--------------------	---

## Pathway

- [Hematopoietic cell lineage](#)

## Disease

- [Campylobacter Infections](#)
- [Genetic Predisposition to Disease](#)
- [Guillain-Barre Syndrome](#)
- [Lung Diseases](#)
- [Mycobacterium Infections](#)
- [Polyradiculoneuropathy](#)