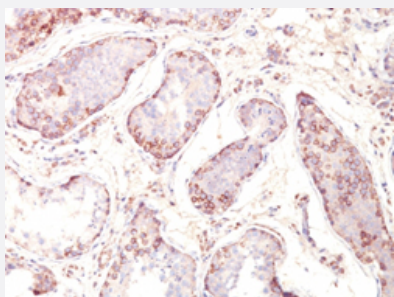


MAGEA1 monoclonal antibody, clone MZ2E/838

Catalog # MAB13340 Size 100 ug

Applications



Immunohistochemistry (Formalin/PFA-fixed paraffin-embedded sections)

Immunohistochemical staining (Formalin-fixed paraffin-embedded sections) of human testicle tumor with MAGEA1 monoclonal antibody, clone MZ2E/838 (Cat # MAB13340).

Specification

Product Description	Mouse monoclonal antibody raised against full length recombinant human MAGEA1.
Immunogen	Recombinant protein corresponding to full length human MAGEA1.
Host	Mouse
Theoretical MW (kDa)	42-46
Reactivity	Human
Specificity	This monoclonal antibody does not cross-react with other members of MAGE family.
Form	Liquid
Purification	Protein A/G purification
Isotype	IgG1, kappa
Recommend Usage	Flow Cytometry (0.5-1 ug/10 ⁶ cells in 0.1 mL) Immunofluorescence (1-2 ug/mL) Immunohistochemistry (Formalin/PFA-fixed paraffin-embedded sections) (0.5-1 ug/mL) The optimal working dilution should be determined by the end user.

Storage Buffer	In 10 mM PBS.
----------------	---------------

Storage Instruction	Store at -20 to -80°C. Aliquot to avoid repeated freezing and thawing.
---------------------	---

Applications

- Immunohistochemistry (Formalin/PFA-fixed paraffin-embedded sections)

Immunohistochemical staining (Formalin-fixed paraffin-embedded sections) of human testicle tumor with MAGEA1 monoclonal antibody, clone MZ2E/838 (Cat # MAB13340).

- Immunofluorescence

- Flow Cytometry

Gene Info — MAGEA1

Entrez GeneID	4100
---------------	----------------------

Protein Accession#	P43355
--------------------	------------------------

Gene Name	MAGEA1
-----------	--------

Gene Alias	MAGE1, MGC9326
------------	----------------

Gene Description	melanoma antigen family A, 1 (directs expression of antigen MZ2-E)
------------------	--

Omim ID	300016
---------	------------------------

Gene Ontology	Hyperlink
---------------	---------------------------

Gene Summary	This gene is a member of the MAGEA gene family. The members of this family encode proteins with 50 to 80% sequence identity to each other. The promoters and first exons of the MAGEA genes show considerable variability, suggesting that the existence of this gene family enables the same function to be expressed under different transcriptional controls. The MAGEA genes are clustered at chromosomal location Xq28. They have been implicated in some hereditary disorders, such as dyskeratosis congenita. [provided by RefSeq]
--------------	---

Other Designations	OTTHUMP00000025911 melanoma antigen MAGE-1 melanoma antigen family A 1 melanoma antigen family A, 1 melanoma-associated antigen 1 melanoma-associated antigen MZ2-E
--------------------	---