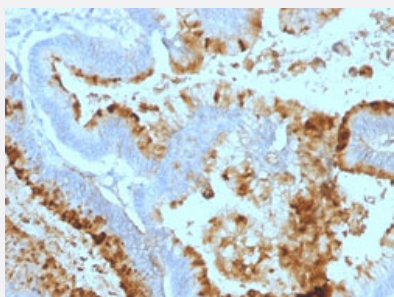


# Lewis A (Blood Group Antigen) monoclonal antibody, clone 7LE

Catalog # MAB13218      Size 100 ug

## Applications



### Immunohistochemistry (Formalin/PFA-fixed paraffin-embedded sections)

Immunohistochemical staining (Formalin-fixed paraffin-embedded sections) of human colon carcinoma using Lewis A (Blood Group Antigen) monoclonal antibody, clone 7LE (Cat # MAB13218).

## Specification

**Product Description** Mouse monoclonal antibody raised against native human Lewis A (Blood Group Antigen).

**Immunogen** Mucins isolated from ovarian cyst fluid.

**Host** Mouse

**Reactivity** Human

**Form** Liquid

**Purification** Protein A/G purification

**Isotype** IgG1, kappa

**Recommend Usage**  
Flow Cytometry (0.5-1 ug/million cells in 0.1 mL)  
Immunofluorescence (0.5-1 ug/mL)  
Immunohistochemistry (Formalin/PFA-fixed paraffin-embedded sections) (0.5-1 ug/mL)  
The optimal working dilution should be determined by the end user.

**Storage Buffer** In 10 mM PBS.

**Storage Instruction**  
Store at -20 to -80°C.  
Aliquot to avoid repeated freezing and thawing.

## Applications

- Immunohistochemistry (Formalin/PFA-fixed paraffin-embedded sections)

Immunohistochemical staining (Formalin-fixed paraffin-embedded sections) of human colon carcinoma using Lewis A (Blood Group Antigen) monoclonal antibody, clone 7LE (Cat # MAB13218).

- Immunofluorescence

- Flow Cytometry