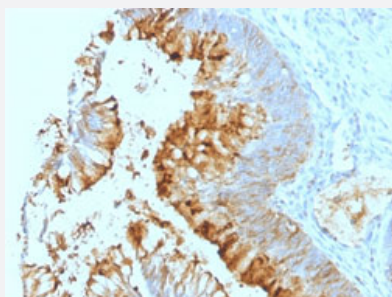


Lewis A monoclonal antibody, clone SPM279

Catalog # MAB13203 Size 100 ug

Applications



Immunohistochemistry (Formalin/PFA-fixed paraffin-embedded sections)

Immunohistochemical staining (Formalin-fixed paraffin-embedded sections) of human colon cancer with Lewis A monoclonal antibody, clone SPM279 (Cat # MAB13203).

Specification

Product Description	Mouse monoclonal antibody raised against native human Lewis A.
Immunogen	Mucins isolated from ovarian cyst fluid.
Host	Mouse
Reactivity	Human
Form	Liquid
Purification	Protein A/G purification
Isotype	IgG1, kappa
Recommend Usage	Flow Cytometry (0.5-1 ug/10 ⁶ cells in 0.1 mL) Immunofluorescence (0.5-1 ug/mL) Immunohistochemistry (Formalin/PFA-fixed paraffin-embedded sections) (0.5-1 ug/mL) The optimal working dilution should be determined by the end user.
Storage Buffer	In 10 mM PBS (0.05% BSA, 0.05% sodium azide).
Storage Instruction	Store at 4°C.

Note

This product contains sodium azide: a POISONOUS AND HAZARDOUS SUBSTANCE which should be handled by trained staff only.

Applications

- Immunohistochemistry (Formalin/PFA-fixed paraffin-embedded sections)

Immunohistochemical staining (Formalin-fixed paraffin-embedded sections) of human colon cancer with Lewis A monoclonal antibody, clone SPM279 (Cat # MAB13203).

- Immunofluorescence

- Flow Cytometry