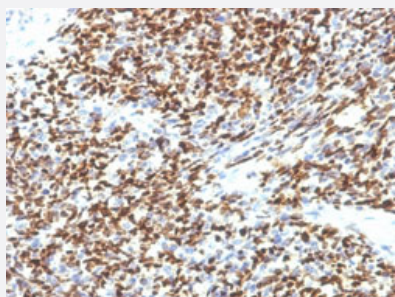


PAX7 monoclonal antibody, clone SPM613

Catalog # MAB13135 Size 100 ug

Applications



Immunohistochemistry (Formalin/PFA-fixed paraffin-embedded sections)

Immunohistochemical staining (Formalin-fixed paraffin-embedded sections) of human rhabdomyosarcoma with PAX7 monoclonal antibody, clone SPM613 (Cat # MAB13135).

Specification

| | |
|-----------------------------|--|
| Product Description | Mouse monoclonal antibody raised against partial recombinant human PAX7. |
| Immunogen | Recombinant protein corresponding to amino acids 300-600 of human PAX7. |
| Host | Mouse |
| Theoretical MW (kDa) | 57 |
| Reactivity | Human |
| Form | Liquid |
| Purification | Protein A/G purification |
| Isotype | IgG1, kappa |
| Recommend Usage | Immunohistochemistry (Formalin/PFA-fixed paraffin-embedded sections) (0.5-1 ug/mL) The optimal working dilution should be determined by the end user. |
| Storage Buffer | In 10 mM PBS (0.05% BSA, 0.05% sodium azide). |
| Storage Instruction | Store at 4°C. |

Note

This product contains sodium azide: a POISONOUS AND HAZARDOUS SUBSTANCE which should be handled by trained staff only.

Applications

- Immunohistochemistry (Formalin/PFA-fixed paraffin-embedded sections)

Immunohistochemical staining (Formalin-fixed paraffin-embedded sections) of human rhabdomyosarcoma with PAX7 monoclonal antibody, clone SPM613 (Cat # MAB13135).

Gene Info — PAX7

Entrez GeneID [5081](#)

Protein Accession# [P23759](#)

Gene Name PAX7

Gene Alias HUP1, PAX7B

Gene Description paired box 7

Omim ID [167410 268220](#)

Gene Ontology [Hyperlink](#)

Gene Summary This gene is a member of the paired box (PAX) family of transcription factors. Members of this gene family typically contain a paired box domain, an octapeptide, and a paired-type homeodomain. These genes play critical roles during fetal development and cancer growth. The specific function of the paired box 7 gene is unknown but speculated to involve tumor suppression since fusion of this gene with a forkhead domain family member has been associated with alveolar rhabdomyosarcoma. Three transcript variants encoding different isoforms have been found for this gene. [provided by RefSeq]

Other Designations OTTHUMP00000002534|PAX7 transcriptional factor|paired box gene 7|paired box homeotic gene 7|paired domain gene 7

Disease

- [Cleft Lip](#)
- [Cleft Palate](#)
- [Genetic Predisposition to Disease](#)

- [Narcolepsy](#)