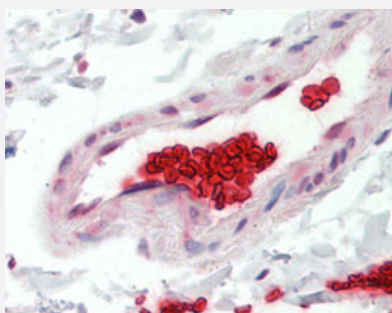


# GYPA monoclonal antibody, clone YTH89.1

Catalog # MAB12870      Size 100 ug

## Applications



### Immunohistochemistry (Formalin/PFA-fixed paraffin-embedded sections)

Immunohistochemical staining (Formalin-fixed paraffin-embedded sections) of human erythrocytes with GYPA monoclonal antibody, clone YTH89.1 (Cat # MAB12870).

## Specification

**Product Description** Rat monoclonal antibody raised against human GYPA.

**Immunogen** Human GYPA.

**Host** Rat

**Reactivity** Human

**Form** Liquid

**Purification** Protein G purification

**Isotype** IgG2b

**Recommend Usage**  
Flow Cytometry (1:10-1:25)  
Immunohistochemistry (Frozen sections) (1:100-1:1000)  
Immunohistochemistry (Formalin/PFA-fixed paraffin-embedded sections) (2.5-5 ug/mL)  
The optimal working dilution should be determined by the end user.

**Storage Buffer** In PBS (0.09% sodium azide).

**Storage Instruction**  
Store at 4°C. For long term storage store at -20°C.  
Aliquot to avoid repeated freezing and thawing.

**Note**

This product contains sodium azide: a POISONOUS AND HAZARDOUS SUBSTANCE which should be handled by trained staff only.

## Applications

- Immunohistochemistry (Formalin/PFA-fixed paraffin-embedded sections)

Immunohistochemical staining (Formalin-fixed paraffin-embedded sections) of human erythrocytes with GYPA monoclonal antibody, clone YTH89.1 (Cat # MAB12870).

- Immunohistochemistry (Frozen sections)
- Flow Cytometry

## Gene Info — GYPA

Entrez GeneID	<a href="#">2993</a>
Protein Accession#	<a href="#">P02724</a>
Gene Name	GYPA
Gene Alias	CD235a, GPA, GPERik, GPSAT, GpMiIII, HGpMiIII, HGpMiV, HGpMiX, HGpMiXI, HGpSta(C), MN, MNS
Gene Description	glycophorin A (MNS blood group)
Omim ID	<a href="#">111300 611162</a>
Gene Ontology	<a href="#">Hyperlink</a>
Gene Summary	Glycophorins A (GYPA) and B (GYPB) are major sialoglycoproteins of the human erythrocyte membrane which bear the antigenic determinants for the MN and Ss blood groups. In addition to the M or N and S or s antigens that commonly occur in all populations, about 40 related variant phenotypes have been identified. These variants include all the variants of the Miltenberger complex and several isoforms of Sta, as well as Dantu, Sat, He, Mg, and deletion variants Ena, S-s-U- and Mk. Most of the variants are the result of gene recombinations between GYPA and GYPB. [provided by RefSeq]
Other Designations	Mi.V glycoprotein (24 AA) erythroid-lineage-specific membrane sialoglycoprotein glycophorin A glycophorin A (MN blood group) glycophorin A MNS blood group glycophorin A, GPA glycophorin E rik glycophorin Mi glycophorin MiIII glycophorin MiV glycophorin Mi

## Pathway

- [Hematopoietic cell lineage](#)

## Disease

- [Asthma](#)
- [Crohn Disease](#)
- [Genetic Predisposition to Disease](#)
- [Malaria](#)