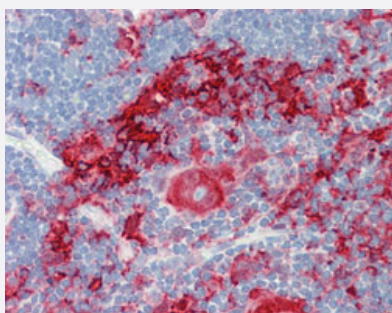


GSN monoclonal antibody, clone GEL-42

Catalog # MAB12861 Size 50 ug

Applications



Immunohistochemistry (Formalin/PFA-fixed paraffin-embedded sections)

Immunohistochemical staining (Formalin-fixed paraffin-embedded sections) of human thymus with GSN monoclonal antibody, clone GEL-42 (Cat # MAB12861).

Specification

Product Description Mouse monoclonal antibody raised against human GSN.

Immunogen Human plasma.

Host Mouse

Reactivity Human

Form Liquid

Purification Affinity purification

Isotype IgG1

Recommend Usage
 Immunohistochemistry (Frozen sections) (1-2 ug/mL)
 Immunohistochemistry (Formalin/PFA-fixed paraffin-embedded sections) (1-10 ug/mL)
 Western Blot (0.5-1 ug/mL)
 The optimal working dilution should be determined by the end user.

Storage Buffer In 1.2% C₂H₃NaO₂ (2 mg BSA, 0.01 mg sodium azide).

Storage Instruction
 Store at 4°C. For long term storage store at -20°C.
 Aliquot to avoid repeated freezing and thawing.

Note

This product contains sodium azide: a POISONOUS AND HAZARDOUS SUBSTANCE which should be handled by trained staff only.

Applications

- Western Blot
- Immunohistochemistry (Formalin/PFA-fixed paraffin-embedded sections)

Immunohistochemical staining (Formalin-fixed paraffin-embedded sections) of human thymus with GSN monoclonal antibody, clone GEL-42 (Cat # MAB12861).

- Immunohistochemistry (Frozen sections)

Gene Info — GSN

Entrez GeneID [2934](#)

Protein Accession# [P06396](#)

Gene Name GSN

Gene Alias DKFZp313L0718

Gene Description gelsolin (amyloidosis, Finnish type)

Omim ID [105120](#) [137350](#)

Gene Ontology [Hyperlink](#)

Gene Summary The protein encoded by this gene binds to the "plus" ends of actin monomers and filaments to prevent monomer exchange. The encoded calcium-regulated protein functions in both assembly and disassembly of actin filaments. Defects in this gene are a cause of familial amyloidosis Finnish type (FAF). Multiple transcript variants encoding several different isoforms have been found for this gene. [provided by RefSeq]

Other Designations OTTHUMP00000022011|OTTHUMP00000162202|gelsolin

Pathway

- [Fc gamma R-mediated phagocytosis](#)
- [Regulation of actin cytoskeleton](#)

Disease

- [Tobacco Use Disorder](#)