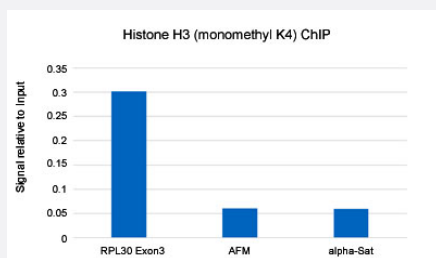


RecomAb™

Histone H3 (acetyl K14) monoclonal antibody, clone RM130

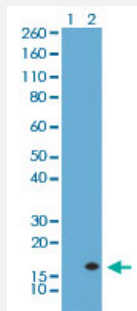
Catalog # MAB12830 Size 100 ug

Applications



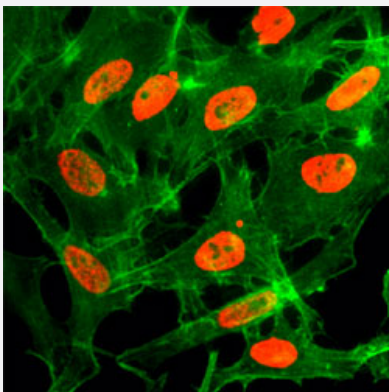
ChIP

ChIP analysis of HeLa cells with Histone H3 (acetyl K14) monoclonal antibody, clone RM130 (Cat # MAB12830) under 5 ug working concentration. Real-time PCR was performed using primers specific to the gene indicated.



Western Blot (Cell lysate)

Western blot analysis of Lane 1: HeLa cells, Lane 2: HeLa cells treated with sodium butyrate using Histone H3 (acetyl K14) monoclonal antibody, clone RM130 (Cat # MAB12830) under 0.5 ug/mL working concentration.



Immunocytochemistry

Immunocytochemistry staining of HeLa cells treated with sodium butyrate using Histone H3 (acetyl K14) monoclonal antibody, clone RM130 (Cat # MAB12830) (Red) under 2 ug/mL working concentration. Actin filaments were stained with fluorescein phalloidin (Green).

Specification

Product Description	Rabbit recombinant monoclonal antibody raised against of human histone H3 (acetyl K14).
Antibody Species	Rabbit
Immunogen	Original antibody is raised against a synthetic acetyl peptide corresponding to residues surrounding K14 of human Histone H3.
Sequence	N/A
Specificity	This antibody reacts to histone H3 acetylated at Lysine 14, and is not affected by the modification of neighboring amino acids. No cross reactivity with acetylated Lysine 4, Lysine 9, Lysine 18, Lysine 23 , Lysine 27, Lysine 36, or Lysine 79 in histone H3.
Form	Liquid
Purification	Protein A affinity purification
Isotype	IgG
Recommend Usage	ChIP (2-10 ug/mL) ELISA (0.2-1 ug/mL) Immunocytochemistry (0.5-2 ug/mL) Western Blot (0.5-2 ug/mL) The optimal working dilution should be determined by the end user.
Storage Buffer	In PBS (50% glycerol, 1% BSA, 0.09% sodium azide)
Storage Instruction	Store at -20°C. Aliquot to avoid repeated freezing and thawing.
Note	This product contains sodium azide: a POISONOUS AND HAZARDOUS SUBSTANCE which should be handled by trained staff only.

Applications

- ChIP

ChIP analysis of HeLa cells with Histone H3 (acetyl K14) monoclonal antibody, clone RM130 (Cat # MAB12830) under 5 ug working concentration. Real-time PCR was performed using primers specific to the gene indicated.

- Western Blot (Cell lysate)

Western blot analysis of Lane 1: HeLa cells, Lane 2: HeLa cells treated with sodium butyrate using Histone H3 (acetyl K14) monoclonal antibody, clone RM130 (Cat # MAB12830) under 0.5 ug/mL working concentration.

- Immunocytochemistry

Immunocytochemistry staining of HeLa cells treated with sodium butyrate using Histone H3 (acetyl K14) monoclonal antibody, clone RM130 (Cat # MAB12830) (Red) under 2 ug/mL working concentration. Actin filaments were stained with fluorescein phalloidin (Green).

- Enzyme-linked Immunoabsorbent Assay

Gene Info — HIST1H3A

Entrez GeneID	8350
Gene Name	HIST1H3A
Gene Alias	H3/A, H3FA
Gene Description	histone cluster 1, H3a
Omim ID	602810
Gene Ontology	Hyperlink
Gene Summary	Histones are basic nuclear proteins that are responsible for the nucleosome structure of the chromosomal fiber in eukaryotes. This structure consists of approximately 146 bp of DNA wrapped around a nucleosome, an octamer composed of pairs of each of the four core histones (H2A, H2B, H3, and H4). The chromatin fiber is further compacted through the interaction of a linker histone, H1, with the DNA between the nucleosomes to form higher order chromatin structures. This gene is intronless and encodes a member of the histone H3 family. Transcripts from this gene lack polyA tails; instead, they contain a palindromic termination element. This gene is found in the large histone gene cluster on chromosome 6p22-p21.3. [provided by RefSeq]
Other Designations	H3 histone family, member A histone 1, H3a

Pathway

- [Systemic lupus erythematosus](#)