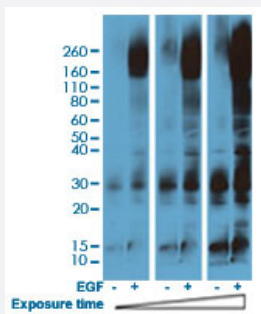


RecomAb™

# Phosphotyrosine monoclonal antibody, clone RM111

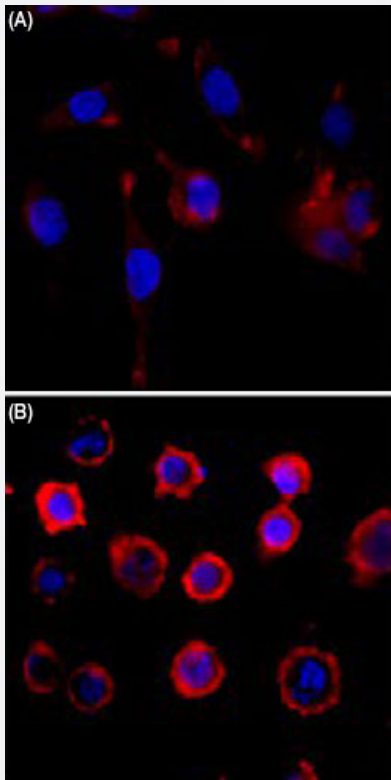
Catalog # MAB12826      Size 100 ug

## Applications



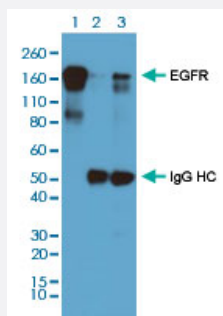
### Western Blot (Cell lysate)

Western blot analysis of serum-starved A431 cells nontreated or treated with 100 ng/mL EGF using Phosphotyrosine monoclonal antibody, clone RM111 (Cat # MAB12826) at 1:5000 dilution.



### Immunocytochemistry

Immunocytochemistry staining of serum-starved A431 cells (A) and serum-starved A431 cells treated with EGF (B) using Phosphotyrosine monoclonal antibody, clone RM111 (Cat # MAB12826) (Red) at 1:500 dilution. Nuclear DNA was stained with DAPI (Blue).



## Immunoprecipitation

Immunoprecipitation analysis of Lane 1: EGE-treated A431 cell whole lysates, Lane 2: EGE-treated A431 cell whole lysates using rabbit IgG antibody; Lane 3: EGE-treated A431 cell whole lysates using Phosphotyrosine monoclonal antibody, clone RM111 (Cat # MAB12826) at 1:1000 dilution.

## Specification

|                            |  |
|----------------------------|--|
| <b>Product Description</b> | Rabbit recombinant monoclonal antibody raised against phosphotyrosine.   |
| <b>Antibody Species</b>    | Rabbit   |
| <b>Immunogen</b>           | Original antibody is raised against phosphotyrosine conjugated with BSA.   |
| <b>Sequence</b>            | N/A  |
| <b>Specificity</b>         | This antibody reacts to tyrosine-phosphorylated proteins. No cross reactivity with nonphosphorylated tyrosine, phosphoserine, and phosphothreonine   |
| <b>Form</b>                | Liquid   |
| <b>Purification</b>        | Protein A affinity purification  |
| <b>Isotype</b>             | IgG  |
| <b>Recommend Usage</b>     | ELISA<br>Flow Cytometry<br>Immunocytochemistry (1:200-1:500)<br>Immunohistochemistry (1:200-1:500)<br>Immunoprecipitation (1:200-1:1000)<br>Western Blot (1:1000-1:5000)<br>The optimal working dilution should be determined by the end user. |
| <b>Storage Buffer</b>      | In PBS (50% glycerol, 1% BSA, 0.09% sodium azide)  |
| <b>Storage Instruction</b> | Store at -20°C.<br>Aliquot to avoid repeated freezing and thawing.   |
| <b>Note</b>                | This product contains sodium azide: a POISONOUS AND HAZARDOUS SUBSTANCE which should be handled by trained staff only.   |

## Applications

- Western Blot (Cell lysate)

Western blot analysis of serum-starved A431 cells nontreated or treated with 100 ng/mL EGF using Phosphotyrosine monoclonal antibody, clone RM111 (Cat # MAB12826) at 1:5000 dilution.

- Immunohistochemistry

- Immunocytochemistry

Immunocytochemistry staining of serum-starved A431 cells (A) and serum-starved A431 cells treated with EGF (B) using Phosphotyrosine monoclonal antibody, clone RM111 (Cat # MAB12826) (Red) at 1:500 dilution. Nuclear DNA was stained with DAPI (Blue).

- Immunoprecipitation

Immunoprecipitation analysis of Lane 1: EGE-treated A431 cell whole lysates, Lane 2: EGE-treated A431 cell whole lysates using rabbit IgG antibody; Lane 3: EGE-treated A431 cell whole lysates using Phosphotyrosine monoclonal antibody, clone RM111 (Cat # MAB12826) at 1:1000 dilution.

- Enzyme-linked Immunoabsorbent Assay

- Flow Cytometry