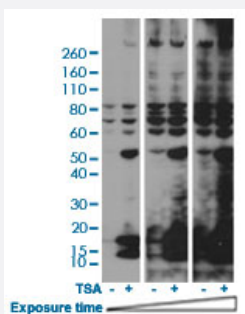


RecomAb™

# Acetylated-Lysine monoclonal antibody, clone RM101

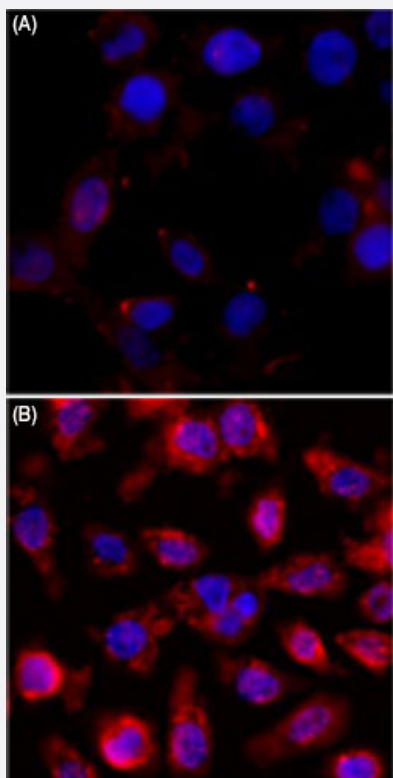
Catalog # MAB12823      Size 100 ug

## Applications



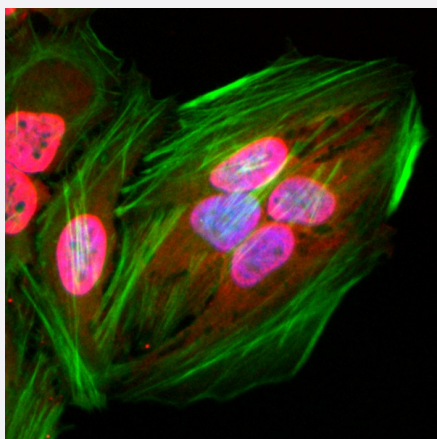
### Western Blot (Cell lysate)

Western blot analysis of HeLa cells nontreated or treated with 400 nM Trichostatin A (TSA) using Acetylated-Lysine monoclonal antibody, clone RM101 (Cat # MAB12823) at 1:2000 dilution.



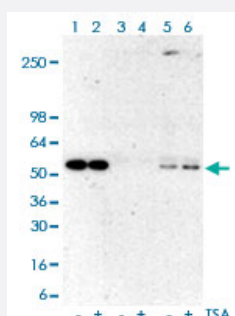
### Immunocytochemistry

Immunocytochemistry staining of A431 cells (A) and A431 cells treated with Trichostatin A (TSA) (B) using Acetylated-Lysine monoclonal antibody, clone RM101 (Cat # MAB12823) (Red) at 1:500 dilution. Nuclear DNA was stained with DAPI (Blue).



## Immunocytochemistry

Immunocytochemical staining of HeLa cells using Acetylated-Lysine monoclonal antibody, clone RM101 (Cat# MAB12823) (red). Actin filaments was labeled with fluorescein phalloidin (green), and nucleus stained with DAPI (blue).



## Immunoprecipitation

Immunoprecipitation analysis of Lane 1: A431 cell whole lysates, Lane 2: TSA-treated A431 cell whole lysates; Lane 3: A431 cell whole lysates, Lane 4: TSA-treated A431 cell whole lysates using rabbit IgG antibody; Lane 5: A431 cell whole lysates, Lane 6: TSA-treated A431 cell whole lysates using Acetylated-Lysine monoclonal antibody, clone RM101 (Cat # MAB12823) at 1:500 dilution.

**This product contains sodium azide: a POISONOUS AND HAZARDOUS SUBSTANCE which should be handled by trained staff only.**

This product contains sodium azide: a POISONOUS AND HAZARDOUS SUBSTANCE which should be handled by trained staff only.

Acetylated-Lysine monoclonal antibody, clone RM101 (Cat# MAB12823) recognizes acetylated lysine in peptides with different sequences. It does not react with non-acetylated lysine.

## Specification

<b>Product Description</b>	Rabbit recombinant monoclonal antibody raised against acetylated-lysine.
<b>Antibody Species</b>	Rabbit
<b>Immunogen</b>	Original antibody is raised against acetyllysine conjugated with BSA.
<b>Sequence</b>	N/A
<b>Specificity</b>	This antibody reacts to lysine-acetylated proteins. No cross reactivity with nonacetylated lysine, and lysine with other modification.

<b>Form</b>	Liquid
<b>Purification</b>	Protein A affinity purification
<b>Isotype</b>	IgG
<b>Recommend Usage</b>	ELISA Flow Cytometry Immunocytochemistry (1:100-1:500) Immunohistochemistry (1:100-1:500) Immunoprecipitation (1:100-1:500) Western Blot (1:500-1:2000) The optimal working dilution should be determined by the end user.
<b>Storage Buffer</b>	In PBS (50% glycerol, 1% BSA, 0.09% sodium azide)
<b>Storage Instruction</b>	Store at -20°C. Aliquot to avoid repeated freezing and thawing.
<b>Note</b>	This product contains sodium azide: a POISONOUS AND HAZARDOUS SUBSTANCE which should be handled by trained staff only. This product contains sodium azide: a POISONOUS AND HAZARDOUS SUBSTANCE which should be handled by trained staff only. Acetylated-Lysine monoclonal antibody, clone RM101 (Cat# MAB12823) recognizes acetylated lysine in peptides with different sequences. It does not react with non-acetylated lysine.

## Applications

- Western Blot (Cell lysate)

Western blot analysis of HeLa cells nontreated or treated with 400 nM Trichostatin A (TSA) using Acetylated-Lysine monoclonal antibody, clone RM101 (Cat # MAB12823) at 1:2000 dilution.

- Immunohistochemistry

- Immunocytochemistry

Immunocytochemistry staining of A431 cells (A) and A431 cells treated with Trichostatin A (TSA) (B) using Acetylated-Lysine monoclonal antibody, clone RM101 (Cat # MAB12823) (Red) at 1:500 dilution. Nuclear DNA was stained with DAPI (Blue).

- Immunocytochemistry

Immunocytochemical staining of HeLa cells using Acetylated-Lysine monoclonal antibody, clone RM101 (Cat# MAB12823) (red). Actin filaments was labeled with fluorescein phalloidin (green), and nucleus stained with DAPI (blue).

- Immunoprecipitation

Immunoprecipitation analysis of Lane 1: A431 cell whole lysates, Lane 2: TSA-treated A431 cell whole lysates; Lane 3: A431 cell whole lysates, Lane 4: TSA-treated A431 cell whole lysates using rabbit IgG antibody; Lane 5: A431 cell whole lysates, Lane 6: TSA-treated A431 cell whole lysates using Acetylated-Lysine monoclonal antibody, clone RM101 (Cat # MAB12823) at 1:500 dilution.

- Enzyme-linked Immunoabsorbent Assay

- Flow Cytometry