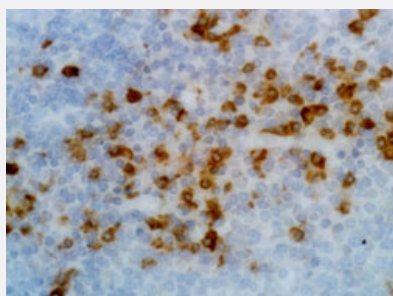


RecomAb™

Human Ig kappa light chain monoclonal antibody, clone RM126

Catalog # MAB12809 Size 100 ug

Applications



Immunohistochemistry (Formalin/PFA-fixed paraffin-embedded sections)

Immunohistochemical staining (Formalin-fixed paraffin-embedded sections) of human tonsil tissue with Human Ig kappa light chain monoclonal antibody, clone RM126 (Cat # MAB12809) under 1 ug/mL working concentration.

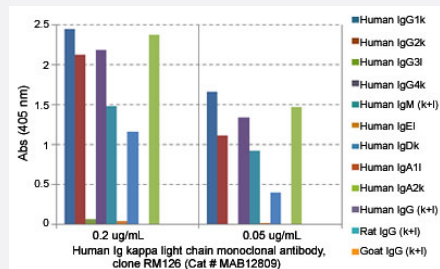
Enzyme-linked Immunoabsorbent Assay

A titer ELISA using Human Ig kappa light chain monoclonal antibody, clone RM126 (Cat# MAB12809). The plate was coated with different amounts of human IgG4κ. A serial dilution of Cat# MAB12809 was used as the primary antibody, followed by an alkaline phosphatase conjugated anti-rabbit IgG as the secondary antibody.

Enzyme-linked Immunoabsorbent Assay

ELISA showing Human Ig kappa light chain monoclonal antibody, clone RM126 (Cat# MAB12809) does not react to monkey IgG. The plate was coated with Rhesus monkey IgG. A serial dilution of Cat# MAB12809 and a monkey IgG binding antibody (positive control) was used as the detection antibody.

Enzyme-linked Immunoabsorbent Assay



ELISA analysis of Human Ig kappa light chain monoclonal antibody, clone RM126 (Cat # MAB12809) at the following concentrations: 0.2 ug/mL, 0.05 ug/mL. The plate was coated with 50 ng/well of different immunoglobulins and the result shows this antibody reacts to the kappa light chain of human immunoglobulins; no cross reactivity with the lambda light chain, mouse IgG, rat IgG, or goat IgG. An alkaline phosphatase conjugated anti-rabbit IgG as the secondary antibody.

Specification

Product Description	Rabbit recombinant monoclonal antibody raised against human Ig kappa light chain.
Antibody Species	Rabbit
Immunogen	Original antibody is raised against human IgG.
Sequence	N/A
Reactivity	Human
Specificity	This antibody reacts to the kappa light chain of human immunoglobulins. No cross reactivity with the lambda light chain, mouse IgG, rat IgG, or goat IgG.
Form	Liquid
Purification	Protein A affinity purification
Isotype	IgG
Recommend Usage	ELISA (0.05-0.2 ug/mL) Flow Cytometry Immunocytochemistry (0.5-2 ug/mL) Immunohistochemistry (0.5-2 ug/mL) The optimal working dilution should be determined by the end user.
Storage Buffer	In PBS (50% glycerol, 1% BSA, 0.09% sodium azide)
Storage Instruction	Store at -20°C. Aliquot to avoid repeated freezing and thawing.
Note	This product contains sodium azide: a POISONOUS AND HAZARDOUS SUBSTANCE which should be handled by trained staff only.

Applications

- Immunohistochemistry (Formalin/PFA-fixed paraffin-embedded sections)

Immunohistochemical staining (Formalin-fixed paraffin-embedded sections) of human tonsil tissue with Human Ig kappa light chain monoclonal antibody, clone RM126 (Cat # MAB12809) under 1 ug/mL working concentration.

- Immunocytochemistry

- Enzyme-linked Immunoabsorbent Assay

A titer ELISA using Human Ig kappa light chain monoclonal antibody, clone RM126 (Cat# MAB12809). The plate was coated with different amounts of human IgG4κ. A serial dilution of Cat# MAB12809 was used as the primary antibody, followed by an alkaline phosphatase conjugated anti-rabbit IgG as the secondary antibody.

- Enzyme-linked Immunoabsorbent Assay

ELISA showing Human Ig kappa light chain monoclonal antibody, clone RM126 (Cat# MAB12809) does not react to monkey IgG. The plate was coated with Rhesus monkey IgG. A serial dilution of Cat# MAB12809 and a monkey IgG binding antibody (positive control) was used as the detection antibody.

- Enzyme-linked Immunoabsorbent Assay

ELISA analysis of Human Ig kappa light chain monoclonal antibody, clone RM126 (Cat # MAB12809) at the following concentrations: 0.2 ug/mL, 0.05 ug/mL. The plate was coated with 50 ng/well of different immunoglobulins and the result shows this antibody reacts to the kappa light chain of human immunoglobulins; no cross reactivity with the lambda light chain, mouse IgG, rat IgG, or goat IgG. An alkaline phosphatase conjugated anti-rabbit IgG as the secondary antibody.

- Flow Cytometry

Gene Info — IGKC

Entrez GeneID	3514
Gene Name	IGKC
Gene Alias	HCAK1, Km, MGC111575, MGC62011, MGC72072, MGC88770, MGC88771, MGC88809
Gene Description	immunoglobulin kappa constant
Omim ID	147200
Gene Ontology	Hyperlink
Other Designations	-

Disease

- [Dermatomyositis](#)
- [Genetic Predisposition to Disease](#)
- [Helicobacter Infections](#)
- [Polymyositis](#)
- [Purpura](#)
- [Sarcoidosis](#)