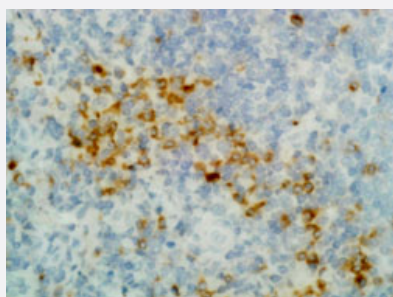


RecomAb™

# Human IgG (gamma heavy chain) monoclonal antibody, clone RM116

Catalog # MAB12808      Size 100 ug

## Applications



### Immunohistochemistry (Formalin/PFA-fixed paraffin-embedded sections)

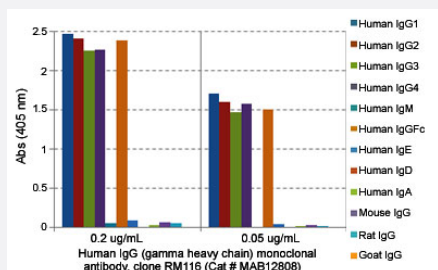
Immunohistochemical staining (Formalin-fixed paraffin-embedded sections) of human tonsil tissue with Human IgG (gamma heavy chain) monoclonal antibody, clone RM116 (Cat # MAB12808) under 1 ug/mL working concentration.

### Enzyme-linked Immunoabsorbent Assay

ELISA analysis of Human IgG (gamma heavy chain) monoclonal antibody, clone RM116 (Cat # MAB12808) at the following concentrations: 0.2 ug/mL, 0.05 ug/mL. The plate was coated with 50 ng/well of different immunoglobulins and the result shows this antibody reacts to the gamma 1, gamma 2, gamma3, gamma 4 of human IgGs and the Fc of human IgG; no cross reactivity with other human heavy chains, mouse IgG, rat IgG, or goat IgG. An alkaline phosphatase conjugated anti-rabbit IgG as the secondary antibody.

### Enzyme-linked Immunoabsorbent Assay

A titer ELISA using Human IgG (gamma heavy chain) monoclonal antibody, clone RM116 (Cat# MAB12808). The plate was coated with different amounts of human IgG1. A serial dilution of Cat# MAB12808 was used as the primary antibody. An alkaline phosphatase conjugated anti-rabbit IgG as the secondary antibody.



## Specification

Product Description	Rabbit recombinant monoclonal antibody raised against human IgG (gamma heavy chain).
Antibody Species	Rabbit
Immunogen	Original antibody is raised against human IgG.
Sequence	N/A
Reactivity	Human
Specificity	This antibody reacts to the Fc region of all gamma heavy chains of human immunoglobulins, including gamma 1, gamma2, gamma 3, and gamma 4. No cross reactivity with other human heavy chains, mouse IgG, rat IgG or goat IgG.
Form	Liquid
Purification	Protein A affinity purification
Isotype	IgG
Recommend Usage	ELISA (0.05-0.2 ug/mL for detection; 0.05-0.2 ug/well for capture) Flow Cytometry Immunocytochemistry (0.5-2 ug/mL) Immunohistochemistry (0.5-2 ug/mL) The optimal working dilution should be determined by the end user.
Storage Buffer	In PBS (50% glycerol, 1% BSA, 0.09% sodium azide)
Storage Instruction	Store at -20°C. Aliquot to avoid repeated freezing and thawing.
Note	This product contains sodium azide: a POISONOUS AND HAZARDOUS SUBSTANCE which should be handled by trained staff only.

## Applications

- Immunohistochemistry (Formalin/PFA-fixed paraffin-embedded sections)

Immunohistochemical staining (Formalin-fixed paraffin-embedded sections) of human tonsil tissue with Human IgG (gamma heavy chain) monoclonal antibody, clone RM116 (Cat # MAB12808) under 1 ug/mL working concentration.

- Immunocytochemistry

- Enzyme-linked Immunoabsorbent Assay

ELISA analysis of Human IgG (gamma heavy chain) monoclonal antibody, clone RM116 (Cat # MAB12808) at the following concentrations: 0.2 ug/mL, 0.05 ug/mL. The plate was coated with 50 ng/well of different immunoglobulins and the result shows this antibody reacts to the gamma 1, gamma 2, gamma3, gamma 4 of human IgGs and the Fc of human IgG; no cross reactivity with other human heavy chains, mouse IgG, rat IgG, or goat IgG. An alkaline phosphatase conjugated anti-rabbit IgG as the secondary antibody.

- Enzyme-linked Immunoabsorbent Assay

A titer ELISA using Human IgG (gamma heavy chain) monoclonal antibody, clone RM116 (Cat# MAB12808). The plate was coated with different amounts of human IgG1. A serial dilution of Cat# MAB12808 was used as the primary antibody. An alkaline phosphatase conjugated anti-rabbit IgG as the secondary antibody.

- Flow Cytometry

## Gene Info — IGHG1

Entrez GeneID [3500](#)

Protein Accession# [P01857;P01859;P01860;P01861](#)

Gene Name IGHG1

Gene Alias -

Gene Description immunoglobulin heavy constant gamma 1 (G1m marker)

Omim ID [147100](#)

Gene Ontology [Hyperlink](#)

Other Designations -

## Gene Info — IGHG2

Entrez GeneID [3501](#)

Protein Accession# [P01857;P01859;P01860;P01861](#)

Gene Name IGHG2

Gene Alias DKFZp686I04196

Gene Description immunoglobulin heavy constant gamma 2 (G2m marker)

Omim ID	<a href="#">147110</a>
---------	------------------------

Gene Ontology	<a href="#">Hyperlink</a>
---------------	---------------------------

Other Designations	-
--------------------	---

## Gene Info — IGHG3

Entrez GeneID	<a href="#">3502</a>
---------------	----------------------

Protein Accession#	<a href="#">P01857;P01859;P01860;P01861</a>
--------------------	---

Gene Name	IGHG3
-----------	-------

Gene Alias	DKFZp686H11213, FLJ39988, FLJ40036, FLJ40253, FLJ40587, FLJ40789, FLJ40834, IgG3, MGC45809
------------	--

Gene Description	immunoglobulin heavy constant gamma 3 (G3m marker)
------------------	--

Omim ID	<a href="#">147120</a>
---------	------------------------

Gene Ontology	<a href="#">Hyperlink</a>
---------------	---------------------------

Other Designations	-
--------------------	---

## Gene Info — IGHG4

Entrez GeneID	<a href="#">3503</a>
---------------	----------------------

Protein Accession#	<a href="#">P01857;P01859;P01860;P01861</a>
--------------------	---

Gene Name	IGHG4
-----------	-------

Gene Alias	MGC117419
------------	-----------

Gene Description	immunoglobulin heavy constant gamma 4 (G4m marker)
------------------	--

Omim ID	<a href="#">147130</a>
---------	------------------------

Gene Ontology	<a href="#">Hyperlink</a>
---------------	---------------------------

Other Designations	-
--------------------	---

## Disease

- [Asthma](#)
- [Asthma](#)
- [Crohn Disease](#)
- [Dermatomyositis](#)
- [Dermatomyositis](#)
- [Genetic Predisposition to Disease](#)
- [Genetic Predisposition to Disease](#)
- [Helicobacter Infections](#)
- [Hypersensitivity](#)
- [Polymyositis](#)
- [Polymyositis](#)
- [Purpura](#)
- [Sarcoidosis](#)