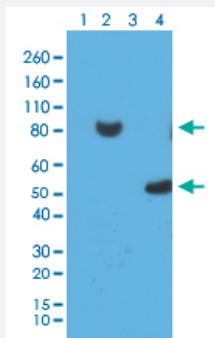


RecomAb™

His-Tag monoclonal antibody, clone RM146

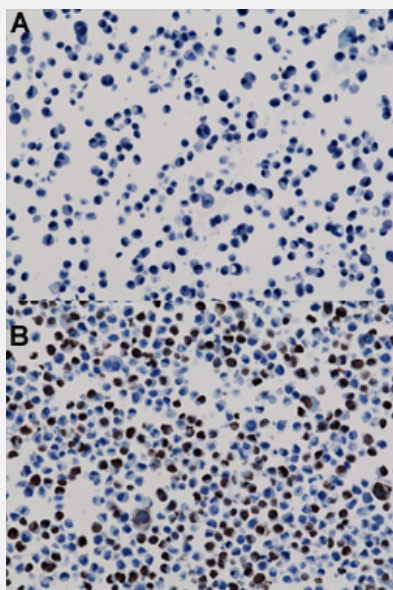
Catalog # MAB12807 Size 100 ug

Applications



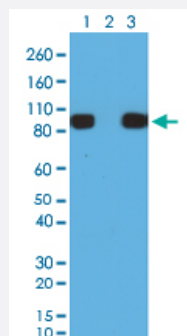
Western Blot

Western blot analysis of 293T cell Lane 1: untransfected with His-Tag fusion protein X, Lane 2: transfected with His-Tag fusion protein X, Lane 3: E. coli lysate without His-Tag Protein Y and Lane 4: E. coli lysate with His-Tag Protein Y with His-Tag monoclonal antibody, clone RM146 (Cat # MAB12807) at 0.2 ug/mL working concentration.



Immunohistochemistry (Formalin/PFA-fixed paraffin-embedded sections)

Immunohistochemical staining (Formalin-fixed paraffin-embedded sections) of naive HepG2 cells (Negative control) (A) and 293T cells expressing His-Tag nuclear protein X (B) with His-Tag monoclonal antibody, clone RM146 (Cat # MAB12807).



Immunoprecipitation

Immunoprecipitation analysis of 293T cells expressing a His-Tag fusion protein with His-Tag monoclonal antibody, clone RM146 (Cat # MAB12807). Lane 1: whole lysate (Control), Lane 2: IP by rabbit IgG (Control) and Lane 3: IP by His-Tag monoclonal antibody, clone RM146 (Cat # MAB12807).

Specification

Product Description	Rabbit recombinant monoclonal antibody raised against of His-Tag.
Antibody Species	Rabbit
Immunogen	Original antibody is raised against a mixture of synthetic peptides corresponding to N-terminus region of 6X His-Tag and C-terminus region of 6X His-Tag.
Sequence	N/A
Specificity	This antibody reacts to recombinant proteins containing the 6X His-Tag or 10X His-Tag fused to either the amino or carboxy terminus. No cross reactivity with other endogenous protein in mammalian or bacteria cells.
Form	Liquid
Purification	Protein A purification
Isotype	IgG
Recommend Usage	Flow Cytometry (0.5 ug/mL-2 ug/mL) Immunocytochemistry (0.5 ug/mL-2 ug/mL) Immunohistochemistry (0.1 ug/mL-1 ug/mL) Immunoprecipitation (0.5 ug/mL-2 ug/mL) Western Blot (0.1 ug/mL-1 ug/mL) The optimal working dilution should be determined by the end user.
Storage Buffer	In PBS (50% glycerol, 1% BSA, 0.09% sodium azide)
Storage Instruction	Store at -20°C. Aliquot to avoid repeated freezing and thawing.
Note	This product contains sodium azide: a POISONOUS AND HAZARDOUS SUBSTANCE which should be handled by trained staff only.

Applications

- Western Blot

Western blot analysis of 293T cell Lane 1: untransfected with His-Tag fusion protein X, Lane 2: transfected with His-Tag fusion protein X, Lane 3: E. coli lysate without His-Tag Protein Y and Lane 4: E. coli lysate with His-Tag Protein Y with His-Tag monoclonal antibody, clone RM146 (Cat # MAB12807) at 0.2 ug/mL working concentration.

- Immunohistochemistry (Formalin/PFA-fixed paraffin-embedded sections)

Immunohistochemical staining (Formalin-fixed paraffin-embedded sections) of naive HepG2 cells (Negative control) (A) and 293T cells expressing His-Tag nuclear protein X (B) with His-Tag monoclonal antibody, clone RM146 (Cat # MAB12807).

- Immunocytochemistry

- Immunoprecipitation

Immunoprecipitation analysis of 293T cells expressing a His-Tag fusion protein with His-Tag monoclonal antibody, clone RM146 (Cat # MAB12807). Lane 1: whole lysate (Control), Lane 2: IP by rabbit IgG (Control) and Lane 3: IP by His-Tag monoclonal antibody, clone RM146 (Cat # MAB12807).

- Flow Cytometry