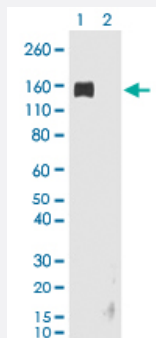


RecomAb™

# Rabbit IgG Fc monoclonal antibody, clone RMG02

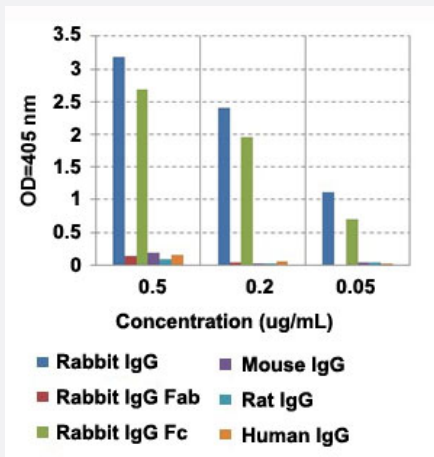
Catalog # MAB12774      Size 100 ug

## Applications



### Western Blot

Western blot analysis of Lane 1: nonreduced (-) and Lane 2: reduced (+) rabbit IgG (20 ng/lane) with Rabbit IgG Fc monoclonal antibody, clone RMG02 (Cat # MAB12774) at 0.2 ug/mL working concentration. This antibody reacted to nonreduced rabbit IgG (~150 kDa).



### Enzyme-linked Immunoabsorbent Assay

ELISA analysis of IgG from different species with Rabbit IgG Fc monoclonal antibody, clone RMG02 (Cat # MAB12774) at the following concentrations: 0.5 ug/mL, 0.2 ug/mL, and 0.05 ug/mL. The plate was coated with 50 ng/well of different IgG and the result shows this antibody reacts to the Fc region of rabbit IgG; no cross reactivity with human IgG, rat IgG, or mouse IgG. An alkaline phosphatase conjugated anti-goat IgG as the secondary antibody.

### Enzyme-linked Immunoabsorbent Assay

A titer ELISA of rabbit IgG. The plate was coated with different amounts of rabbit IgG. A serial dilution of Rabbit IgG Fc monoclonal antibody, clone RMG02 (Cat# MAB12774) was used as the primary antibody. An alkaline phosphatase conjugated anti-goat IgG as the secondary antibody.

## Specification

<b>Product Description</b>	Goat recombinant monoclonal antibody raised against rabbit IgG Fc.
<b>Antibody Species</b>	Goat
<b>Immunogen</b>	Original antibody is raised against rabbit IgG.
<b>Sequence</b>	N/A
<b>Reactivity</b>	Rabbit
<b>Specificity</b>	This antibody reacts to the Fc region of Rabbit IgG. No cross reactivity with human IgG, rat IgG, or mouse IgG.
<b>Form</b>	Liquid
<b>Purification</b>	Protein G purification
<b>Isotype</b>	IgG
<b>Recommend Usage</b>	ELISA (0.01 ug/mL- 0.5 ug/mL) Flow Cytometry Immunocytochemistry (0.5 ug/mL-2 ug/mL) Immunohistochemistry (0.5 ug/mL-2 ug/mL) Immunoprecipitation Western Blot (0.1 ug/mL-0.5 ug/mL) The optimal working dilution should be determined by the end user.
<b>Storage Buffer</b>	In PBS (50% glycerol, 1% BSA, 0.09% sodium azide)
<b>Storage Instruction</b>	Store at -20°C. Aliquot to avoid repeated freezing and thawing.
<b>Note</b>	This product contains sodium azide: a POISONOUS AND HAZARDOUS SUBSTANCE which should be handled by trained staff only.

## Applications

- Western Blot

Western blot analysis of Lane 1: nonreduced (-) and Lane 2: reduced (+) rabbit IgG (20 ng/lane) with Rabbit IgG Fc monoclonal antibody, clone RMG02 (Cat # MAB12774) at 0.2 ug/mL working concentration. This antibody reacted to nonreduced rabbit IgG (~150 kDa).

- Immunohistochemistry (Formalin/PFA-fixed paraffin-embedded sections)

- Immunocytochemistry

- Immunoprecipitation

- Enzyme-linked Immunoabsorbent Assay

ELISA analysis of IgG from different species with Rabbit IgG Fc monoclonal antibody, clone RMG02 (Cat # MAB12774) at the following concentrations: 0.5 ug/mL, 0.2 ug/mL, and 0.05 ug/mL. The plate was coated with 50 ng/well of different IgG and the result shows this antibody reacts to the Fc region of rabbit IgG; no cross reactivity with human IgG, rat IgG, or mouse IgG. An alkaline phosphatase conjugated anti-goat IgG as the secondary antibody.

- Enzyme-linked Immunoabsorbent Assay

A titer ELISA of rabbit IgG. The plate was coated with different amounts of rabbit IgG. A serial dilution of Rabbit IgG Fc monoclonal antibody, clone RMG02 (Cat# MAB12774) was used as the primary antibody. An alkaline phosphatase conjugated anti-goat IgG as the secondary antibody.

- Flow Cytometry