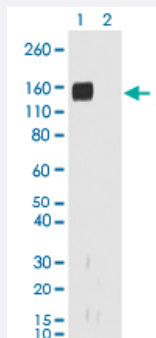


RecomAb™

Rabbit IgG Fab monoclonal antibody, clone RMG01

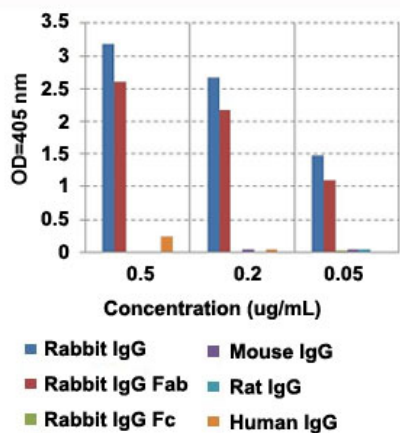
Catalog # MAB12773 Size 100 ug

Applications



Western Blot

Western blot analysis of Lane 1: nonreduced (-) and Lane 2: reduced (+) rabbit IgG (20 ng/lane) with Rabbit IgG Fab monoclonal antibody, clone RMG01 (Cat # MAB12773) at 0.2 ug/mL working concentration. This antibody reacted to nonreduced rabbit IgG (~150 kDa).



Enzyme-linked Immunoabsorbent Assay

ELISA analysis of IgG from different species with Rabbit IgG Fab monoclonal antibody, clone RMG01 (Cat # MAB12773) at the following concentrations: 0.5 ug/mL, 0.2 ug/mL, and 0.05 ug/mL. The plate was coated with 50 ng/well of different IgG and the result shows this antibody reacts to the Fab region of rabbit IgG; no cross reactivity with human IgG, rat IgG, or mouse IgG. An alkaline phosphatase conjugated anti-goat IgG as the secondary antibody.

Enzyme-linked Immunoabsorbent Assay

A titer ELISA of rabbit IgG. The plate was coated with different amounts of rabbit IgG. A serial dilution of Rabbit IgG Fab monoclonal antibody, clone RMG01 (Cat# MAB12773) was used as the primary antibody. An alkaline phosphatase conjugated anti-goat IgG as the secondary antibody.

Specification

| | |
|----------------------------|---|
| Product Description | Goat recombinant monoclonal antibody raised against rabbit IgG Fab. |
| Antibody Species | Goat |
| Immunogen | Original antibody is raised against rabbit IgG. |
| Sequence | N/A |
| Reactivity | Rabbit |
| Specificity | This antibody reacts to the Fab region of Rabbit IgG. No cross reactivity with human IgG, rat IgG, or mouse IgG |
| Form | Liquid |
| Purification | Protein G purification |
| Isotype | IgG |
| Recommend Usage | ELISA (0.01 ug/mL- 0.5 ug/mL) Flow Cytometry Immunocytochemistry (0.5 ug/mL-2 ug/mL) Immunohistochemistry (0.5 ug/mL-2 ug/mL) Immunoprecipitation Western Blot (0.1 ug/mL-0.5 ug/mL) The optimal working dilution should be determined by the end user. |
| Storage Buffer | In PBS (50% glycerol, 1% BSA, 0.09% sodium azide) |
| Storage Instruction | Store at -20°C. Aliquot to avoid repeated freezing and thawing. |
| Note | This product contains sodium azide: a POISONOUS AND HAZARDOUS SUBSTANCE which should be handled by trained staff only. |

Applications

- Western Blot

Western blot analysis of Lane 1: nonreduced (-) and Lane 2: reduced (+) rabbit IgG (20 ng/lane) with Rabbit IgG Fab monoclonal antibody, clone RMG01 (Cat # MAB12773) at 0.2 ug/mL working concentration. This antibody reacted to nonreduced rabbit IgG (~150 kDa).

- Immunohistochemistry (Formalin/PFA-fixed paraffin-embedded sections)

- Immunocytochemistry

- Immunoprecipitation

- Enzyme-linked Immunoabsorbent Assay

ELISA analysis of IgG from different species with Rabbit IgG Fab monoclonal antibody, clone RMG01 (Cat # MAB12773) at the following concentrations: 0.5 ug/mL, 0.2 ug/mL, and 0.05 ug/mL. The plate was coated with 50 ng/well of different IgG and the result shows this antibody reacts to the Fab region of rabbit IgG; no cross reactivity with human IgG, rat IgG, or mouse IgG. An alkaline phosphatase conjugated anti-goat IgG as the secondary antibody.

- Enzyme-linked Immunoabsorbent Assay

A titer ELISA of rabbit IgG. The plate was coated with different amounts of rabbit IgG. A serial dilution of Rabbit IgG Fab monoclonal antibody, clone RMG01 (Cat# MAB12773) was used as the primary antibody. An alkaline phosphatase conjugated anti-goat IgG as the secondary antibody.

- Flow Cytometry