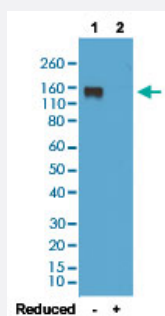


RecomAb™

Mouse IgG2a monoclonal antibody, clone RM219

Catalog # MAB12768 Size 100 ug

Applications

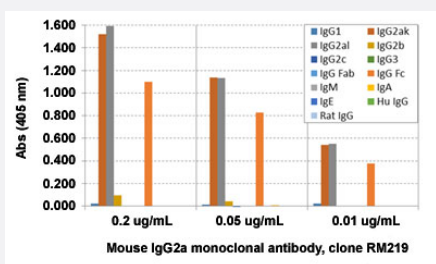


Western Blot

Western blot analysis of Lane 1: nonreduced (-) and Lane 2: reduced (+) mouse IgG2a with Mouse IgG2a monoclonal antibody, clone RM219 (Cat # MAB12768) under 0.5 ug/mL working concentration. This antibody reacts to nonreduced IgG2a (~150 kDa).

Enzyme-linked Immunoabsorbent Assay

ELISA analysis of Mouse IgG2a monoclonal antibody, clone RM219 (Cat # MAB12768) at the following concentrations: 0.2 ug/mL, 0.05 ug/mL, and 0.01 ug/mL. The plate was coated with 50 ng/well of different immunoglobulins and the result shows this antibody reacts to the Fc region of mouse IgG2a; no cross reactivity with IgG1, IgG2b, IgG2c, IgG3, IgM, IgA, IgE, human IgG, or rat IgG. An alkaline phosphatase conjugated anti-rabbit IgG as the secondary antibody.



Specification

Product Description	Rabbit recombinant monoclonal antibody raised against mouse IgG2a.
Antibody Species	Rabbit
Immunogen	Original antibody is raised against mouse IgG2a.
Sequence	N/A
Reactivity	Mouse
Specificity	This antibody reacts to the Fc region of mouse IgG2a. No cross reactivity with mouse IgG1, IgG2b, IgG2c, IgG3, IgM, IgA, IgE, human IgG, or rat IgG.

Form	Liquid
Purification	Protein A affinity purification
Isotype	IgG
Recommend Usage	ELISA (0.005 - 0.2 ug/mL) Flow Cytometry Immunocytochemistry (0.5 - 2 ug/mL) Immunohistochemistry (0.5 - 2 ug/mL) Immunoprecipitation Western Blot (0.5 - 2 ug/mL) The optimal working dilution should be determined by the end user.
Storage Buffer	In PBS (50% glycerol, 1% BSA, 0.09% sodium azide)
Storage Instruction	Store at -20°C. Aliquot to avoid repeated freezing and thawing.
Note	This product contains sodium azide: a POISONOUS AND HAZARDOUS SUBSTANCE which should be handled by trained staff only.

Applications

- Western Blot

Western blot analysis of Lane 1: nonreduced (-) and Lane 2: reduced (+) mouse IgG2a with Mouse IgG2a monoclonal antibody, clone RM219 (Cat # MAB12768) under 0.5 ug/mL working concentration. This antibody reacts to nonreduced IgG2a (~150 kDa).

- Immunohistochemistry

- Immunocytochemistry

- Immunoprecipitation

- Enzyme-linked Immunoabsorbent Assay

ELISA analysis of Mouse IgG2a monoclonal antibody, clone RM219 (Cat # MAB12768) at the following concentrations: 0.2 ug/mL, 0.05 ug/mL, and 0.01 ug/mL. The plate was coated with 50 ng/well of different immunoglobulins and the result shows this antibody reacts to the Fc region of mouse IgG2a; no cross reactivity with IgG1, IgG2b, IgG2c, IgG3, IgM, IgA, IgE, human IgG, or rat IgG. An alkaline phosphatase conjugated anti-rabbit IgG as the secondary antibody.

- Flow Cytometry

Gene Info — Igh-1a

Entrez GeneID	380793
Protein Accession#	P01863
Gene Name	lgh-1a
Gene Alias	1810060O09Rik, IGHG2A, lgh-1, MGC102662, MGC118125, MGC18977
Gene Description	immunoglobulin heavy chain 1a (serum IgG2a)
Gene Ontology	Hyperlink
Other Designations	-